

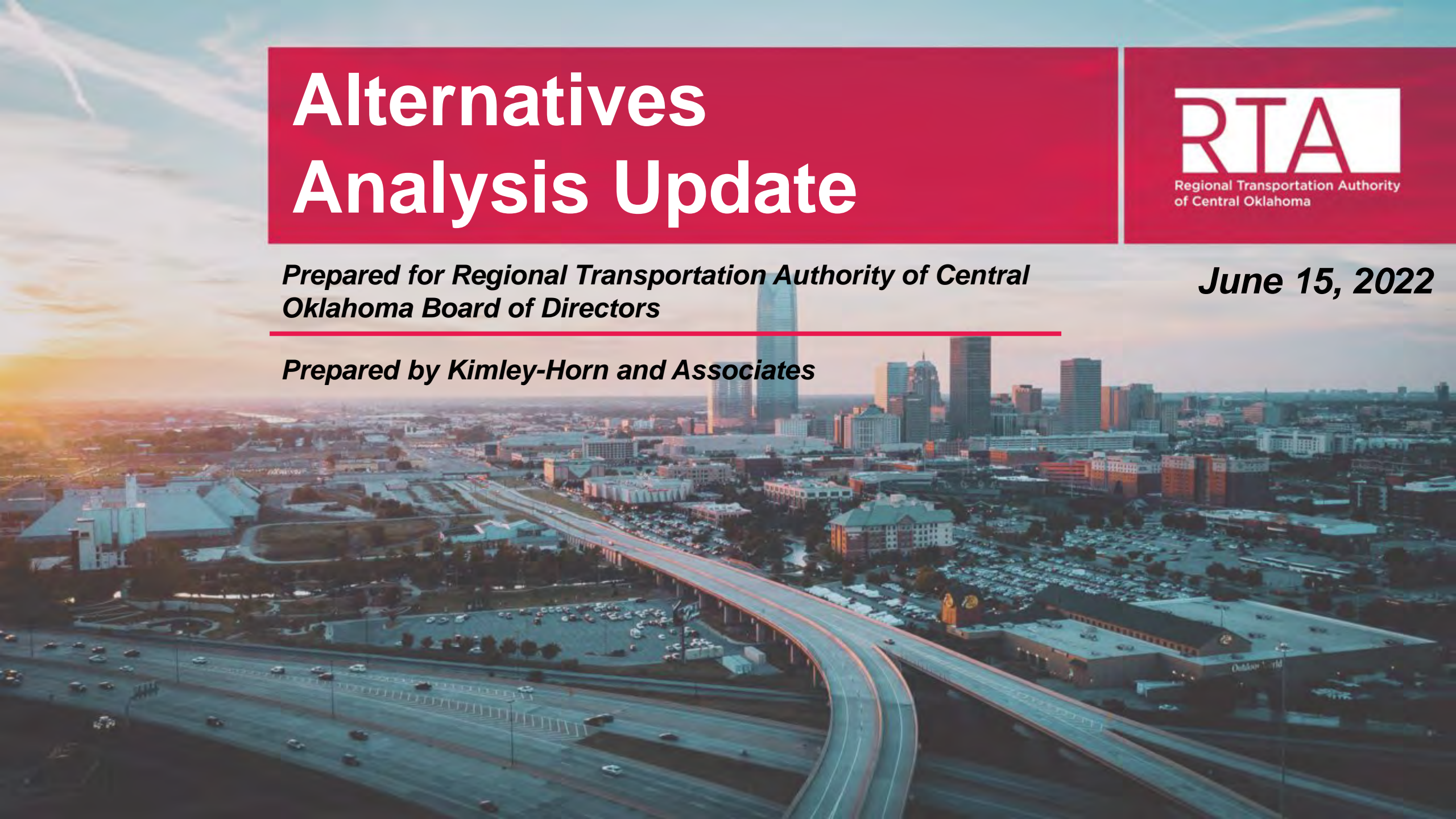
Alternatives Analysis Update



*Prepared for Regional Transportation Authority of Central
Oklahoma Board of Directors*

June 15, 2022

Prepared by Kimley-Horn and Associates



Agenda

- Review Year 2 Progress
- Actions for the Board
- Year 3 Look Ahead
- Town Hall



REVIEW YEAR 2 PROGRESS

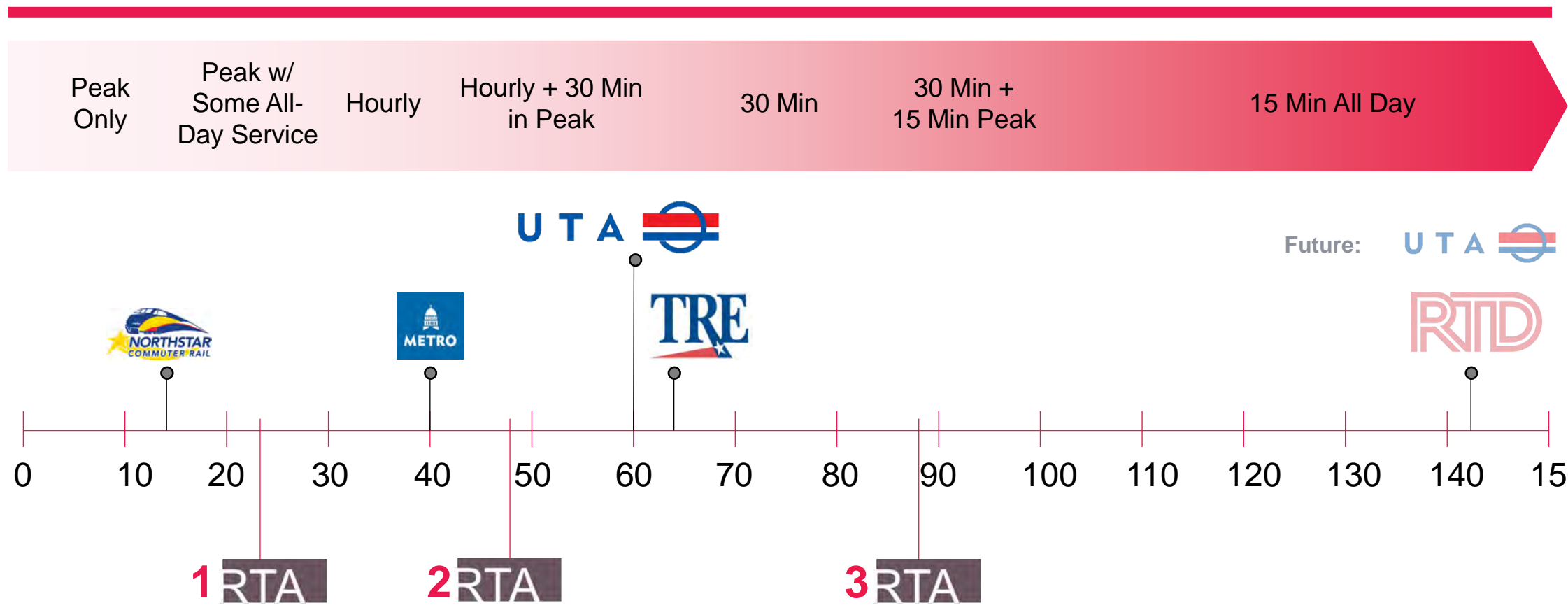


NORTH-SOUTH CORRIDOR

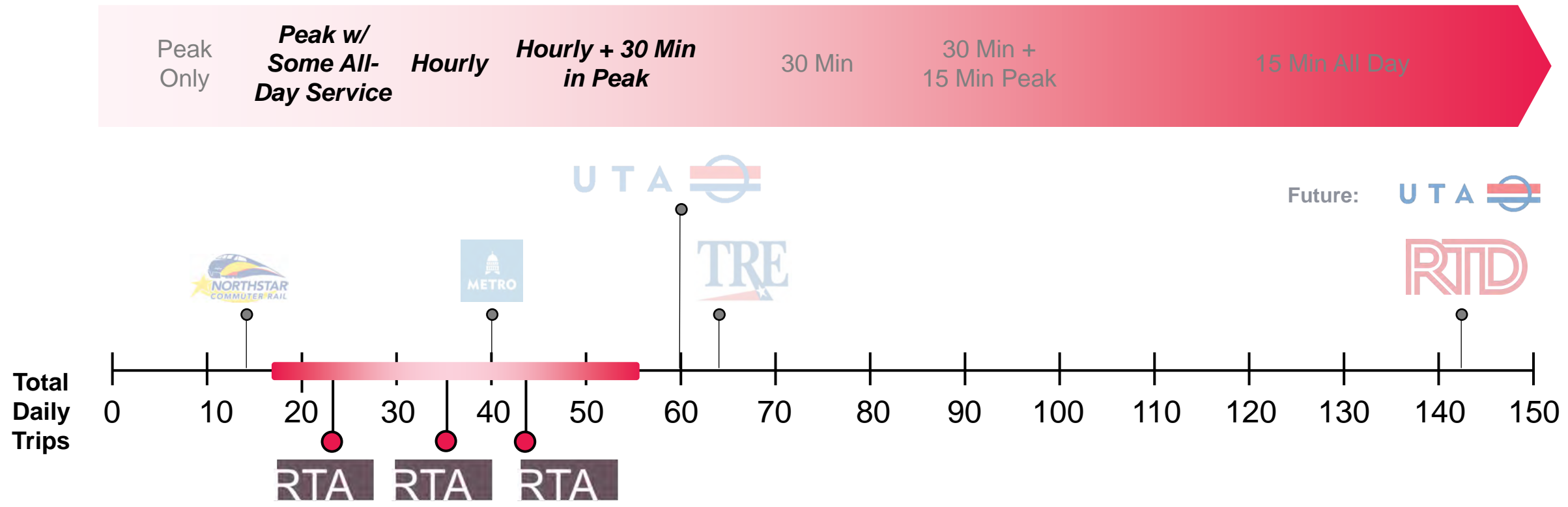
The diagram illustrates a three-step process for developing a rail corridor, represented by a staircase ascending from left to right. Each step is associated with a specific goal and a visual representation.

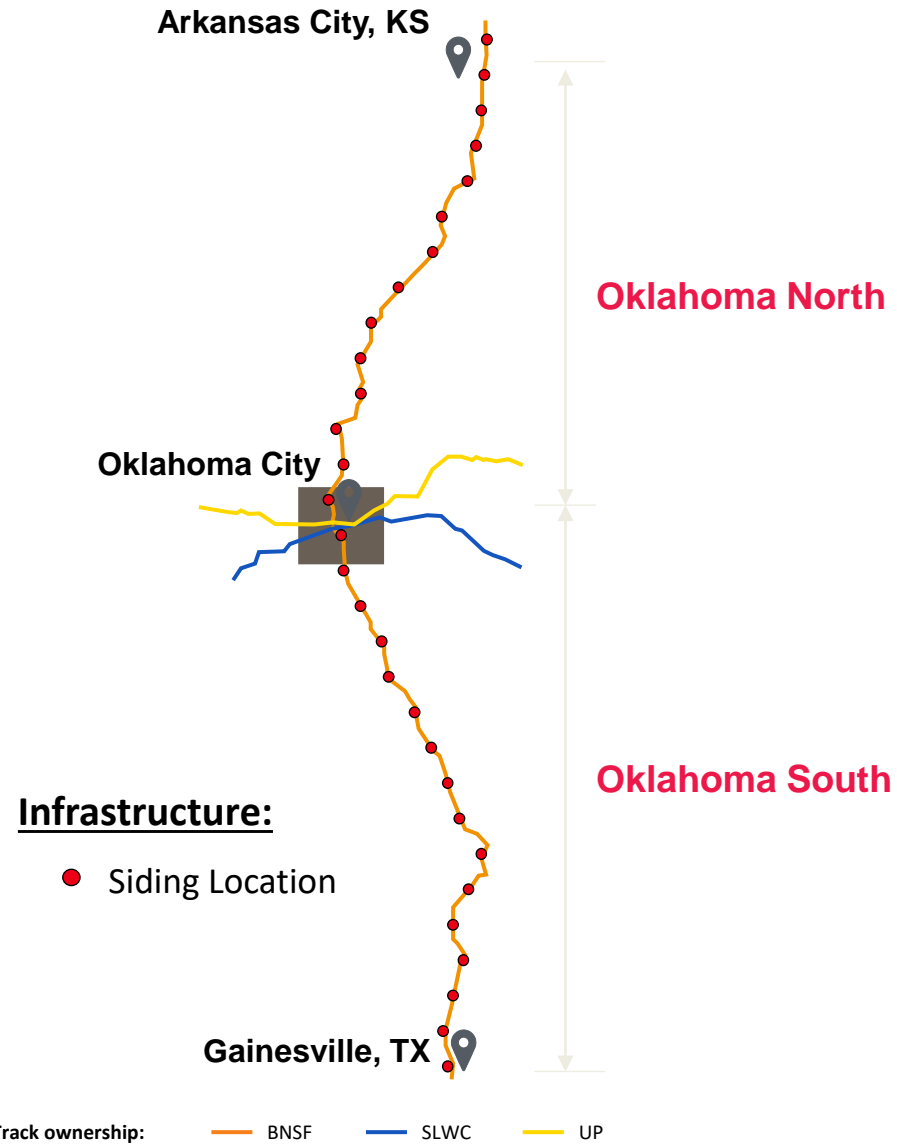
- Step 1: Low interest in rail**
 - Visual: A person walking with a suitcase.
 - Callout: "Goals can scale over time as the corridor matures"
- Step 2: Mode of Choice in Corridor**
 - Visual: A red train labeled "RTA" with a person walking up a ramp.
- Step 3: Fully Integrated Network**
 - Visual: A complex network diagram with a person walking up a ramp, and icons for a person with a cane, a person with a suitcase, a person with a rolling suitcase, and a person in a wheelchair.
 - Callout: "Vision sets a long-term goal from which interim phases are derived."

RTA Vision for Service



RTA Vision for Service





Key Findings

- Entire Subdivision (Kansas – Texas) must be considered
- Several infrastructure bottlenecks within the corridor constrain demand
- New infrastructure including track, sidings, and crossovers will be required to implement passenger rail
- RTA’s detailed capacity analysis provides the information necessary for informed, collaborative discussions with BNSF
- Continued coordination with BNSF to identify opportunities for successful co-location of freight and passenger rail

Year 2 in Review: Cost Estimating Components

CAPITAL COSTS, FINANCING, AND FEES



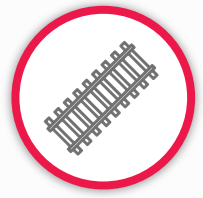
**Equipment and
Facilities**



Financing



Infrastructure



Access Fees

OPERATIONS AND MAINTENANCE COSTS



**Station
Maintenance**



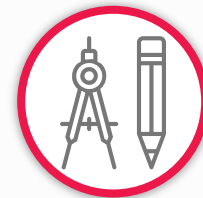
**Transportation
Operations**



**Equipment
Maintenance**



**Maintenance of
Right-of-Way**



**General and
Administrative**

Year 2 in Review: Cost Estimating Components

CAPITAL COSTS, FINANCING, AND FEES



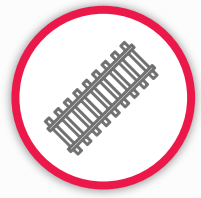
**Equipment and
Facilities**



Financing



Infrastructure



Access Fees

OPERATIONS AND MAINTENANCE COSTS



**Station
Maintenance**



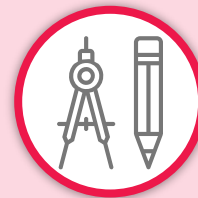
**Transportation
Operations**



**Equipment
Maintenance**



**Maintenance of
Right-of-Way**



**General and
Administrative**

MEGA GRANT APPLICATION FOR

RTA MOVES: BRINGING REGIONAL TRANSIT TO OKLAHOMA CITY
EDMOND TO NORMAN COMMUTER RAIL CORRIDOR

Identified Benefits



>\$200,000,000

Travel time savings generated



25,000,000+

Reduction in vehicle miles
travelled on roadways

>\$900,000,000

Total economic benefit

Year Three Planned Work (FY23)



**Continued discussions
with BNSF**



Cost Estimating



**Identify Operations and
Maintenance Facility Locations**



Ridership Modeling



Analyze Station Locations



Federal Transit
Administration

Prepare for FTA Process

A line art illustration of a train on tracks, viewed from a low angle looking down the length of the train. The train consists of several connected cars, each with multiple windows and doors. The tracks are supported by a series of wooden or metal pilings. The background shows a hazy, distant horizon. The text 'EAST CORRIDOR' is overlaid in large, white, sans-serif capital letters. The left side of the image is a white vertical band, and the rest of the image is a light purple or lavender color.

EAST CORRIDOR

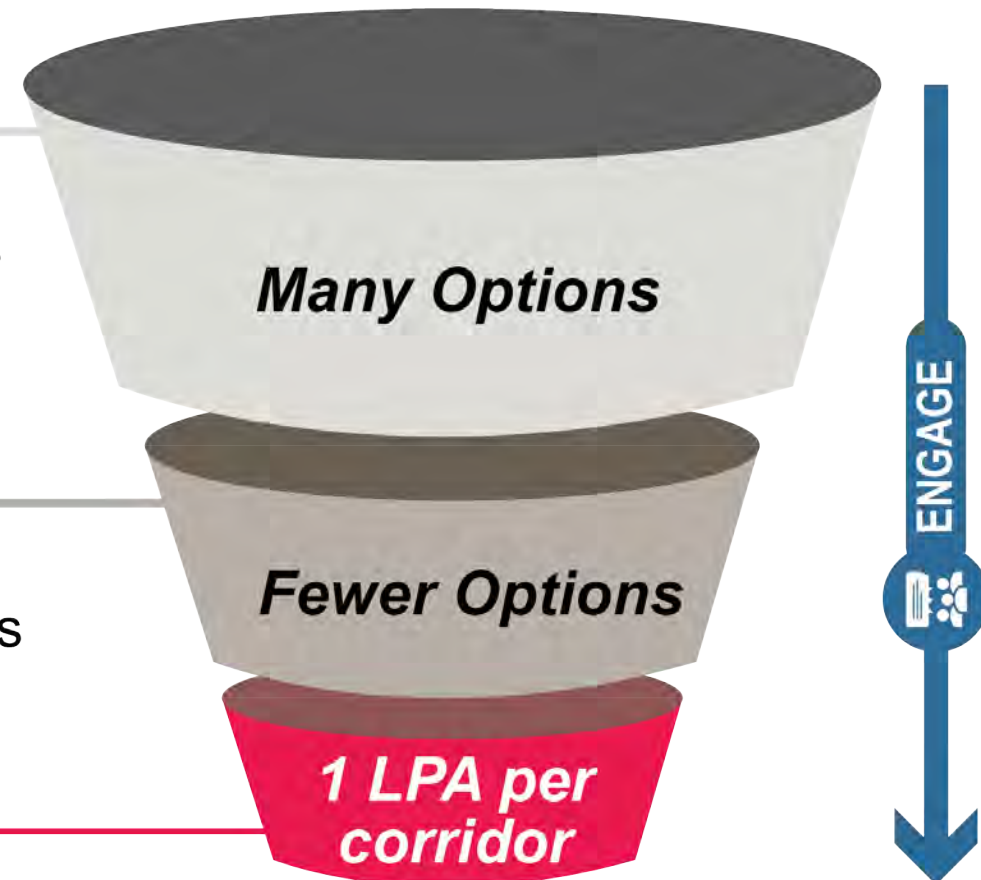
The background is a detailed line drawing of a train yard. A train is visible on the tracks, moving towards the right. The tracks are lined with various structures, including what appear to be loading docks or maintenance buildings. The drawing is done in a clean, technical style with many lines and details. The text is overlaid on the right side of the image, which is shaded in a darker purple tone compared to the left side.

REVIEW YEAR 2 PROGRESS

Alternative Analysis (AA) Process



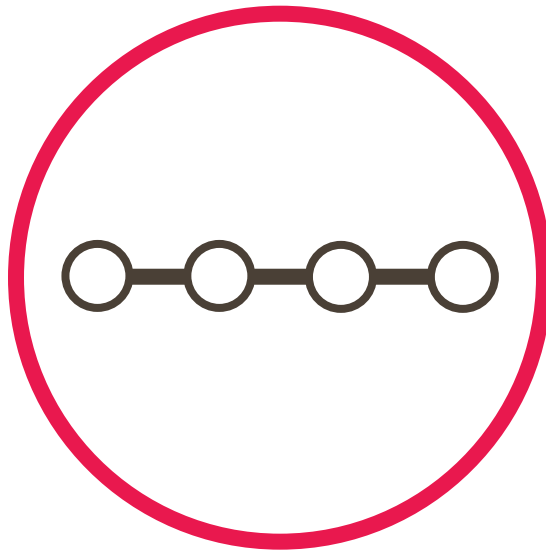
- 1 DISCOVER**
 - Define all reasonable alternatives
 - Screen against goals & objectives
- 2 REFINE**
 - Advance remaining alternatives
 - Perform detailed technical analysis
- 3 SELECT**
 - Board consideration of LPA



Year 2 Discovery



Options

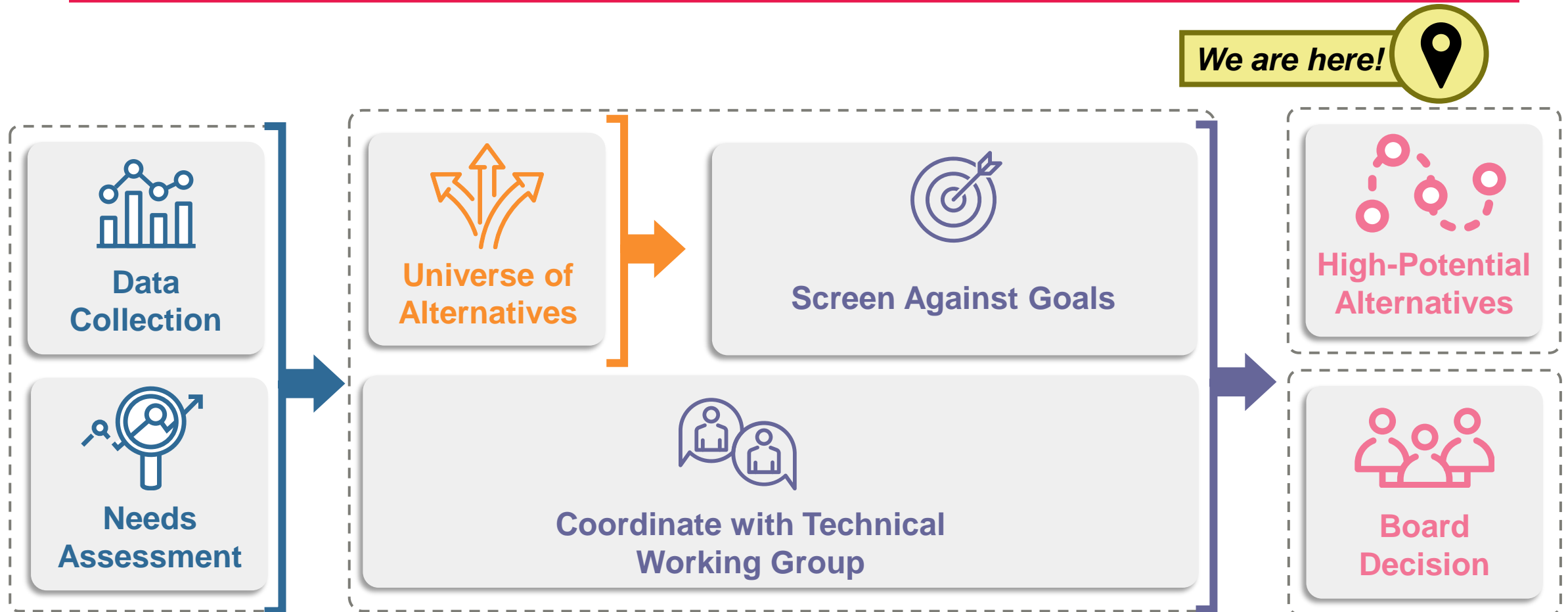


Alignment



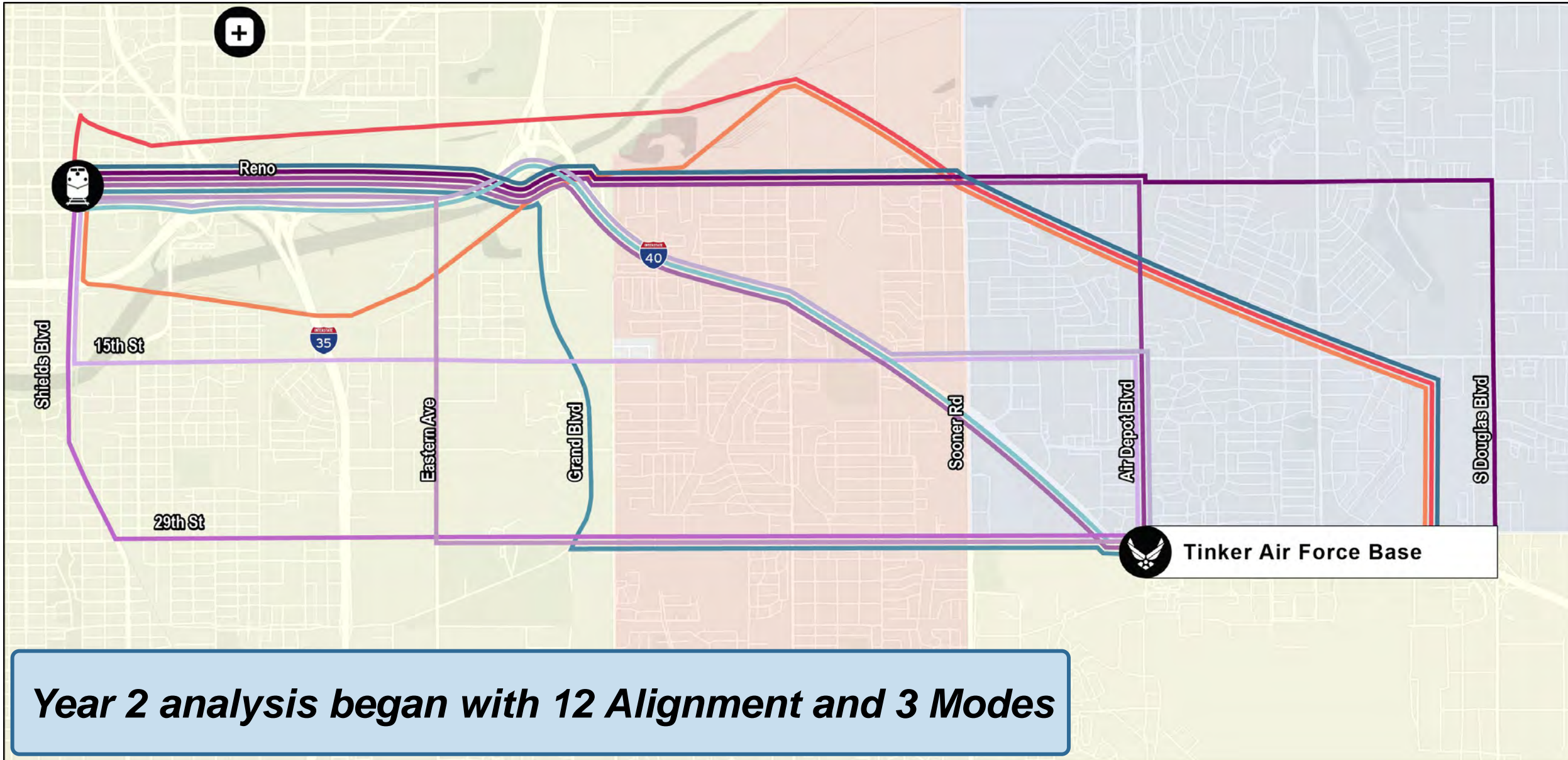
Mode

Discover Phase Process



Year 2 in Review: Universe of Alternatives

RTA



Alternatives Analysis Initial Screening Criteria



Improves Community Connections and Mobility



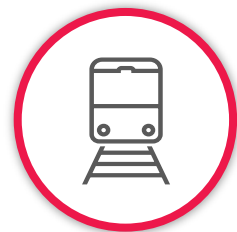
Interfaces with Major Potential Cost Elements



Compatible with Local Land Use and Transportation Plans



Provides Economic Development Potential



Provides Access to Activity

East Corridor Stakeholder Partnerships

Partners



OKLAHOMA
Transportation



Engagement

4 TWG Meetings

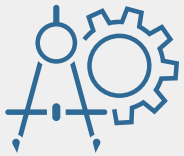
4 Tinker AFB Meetings

3 ODOT Meetings

Notable Discoveries



Incompatibility of Commuter Rail



Engineering constraints on Reno Ave and Grand Ave



Right-of-Way widths and possibility of LRT



I-40 Development Timeline



Tinker AFB Considerations

- APZ
- Transportation Master Plan
- End-of-Line Facility

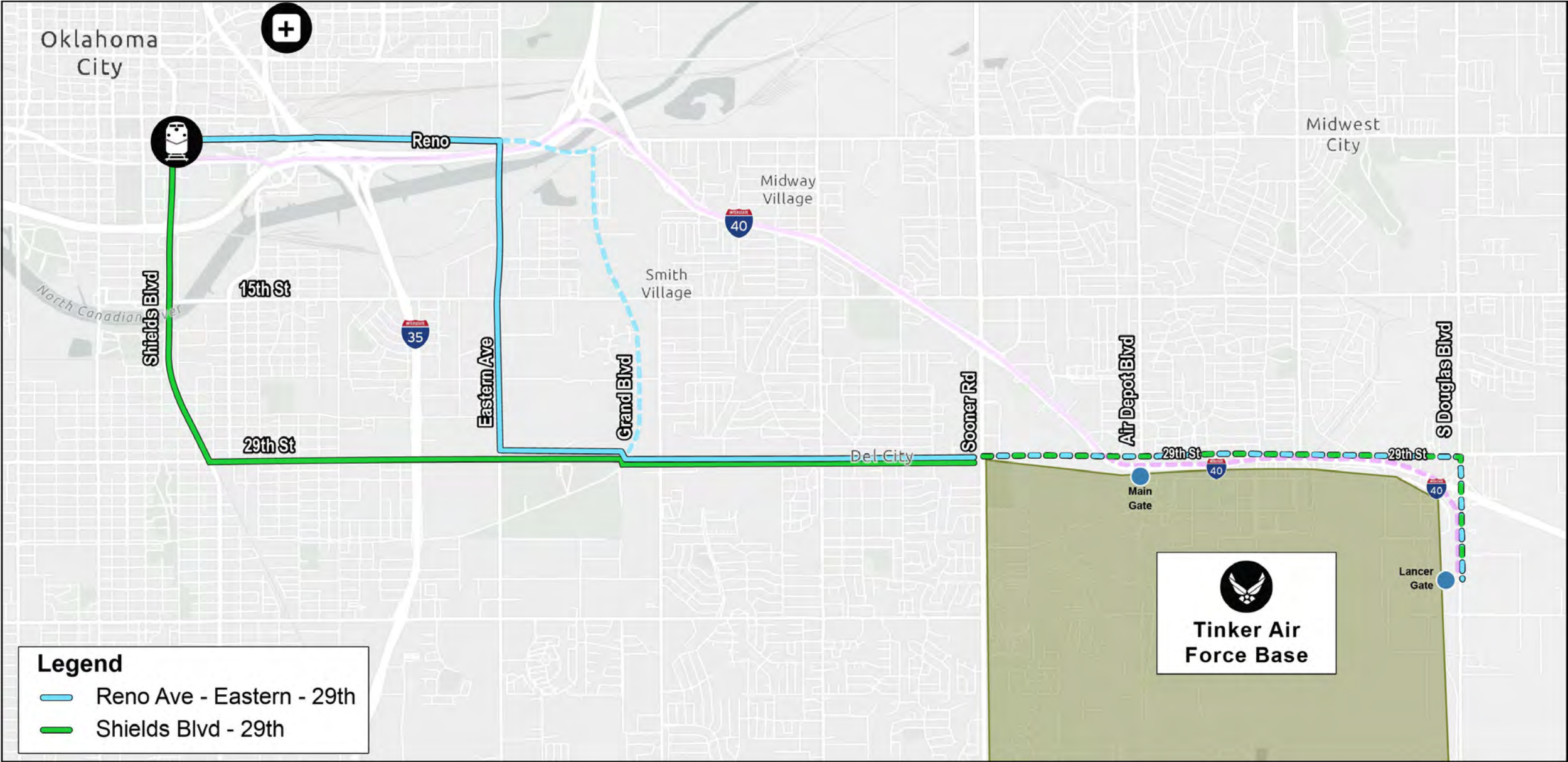


29th Street Station Opportunity



Eastern Ave redevelopment opportunity

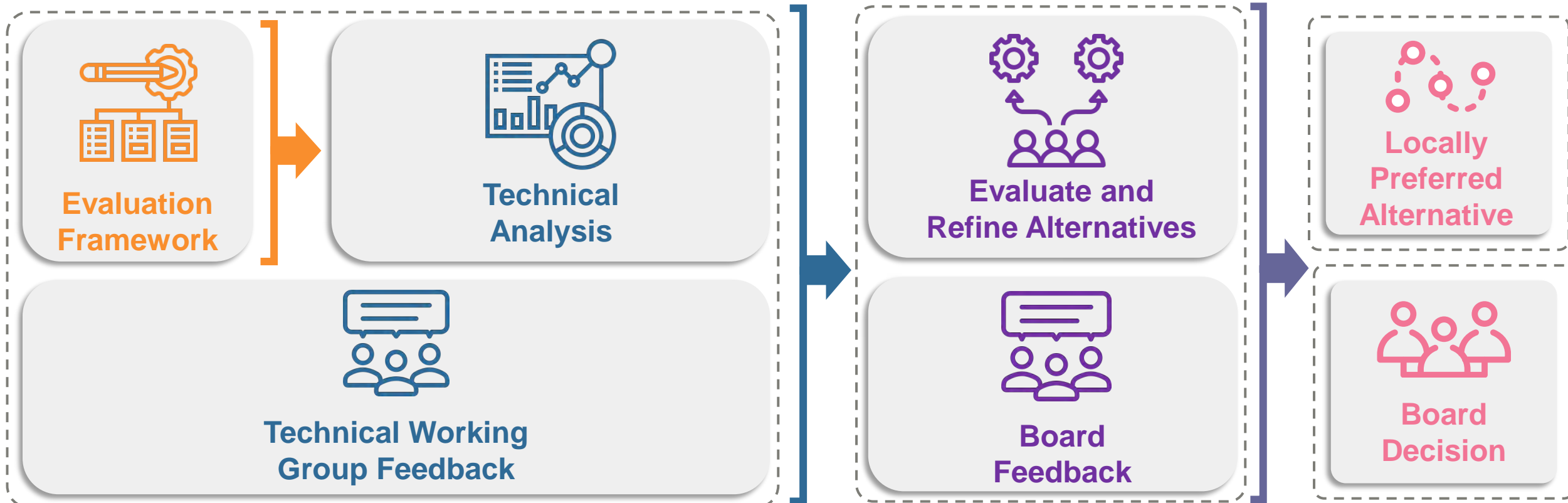
Current High-Potential Alignments



Year 3 – Refine and Select Phase Process



We are here!





Improves Connections

**Connect Activity
Centers and
Regional
Destinations**

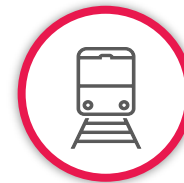
**Provide Access
to Limited
Mobility
Populations**



Economic Development

**Land Use
Compatibility and
Redevelopment**

**Population and
Employment
Density**



Service and System

**Ridership
Potential and
Service Tradeoffs**


**Multimodal
Connections**



Feasibility

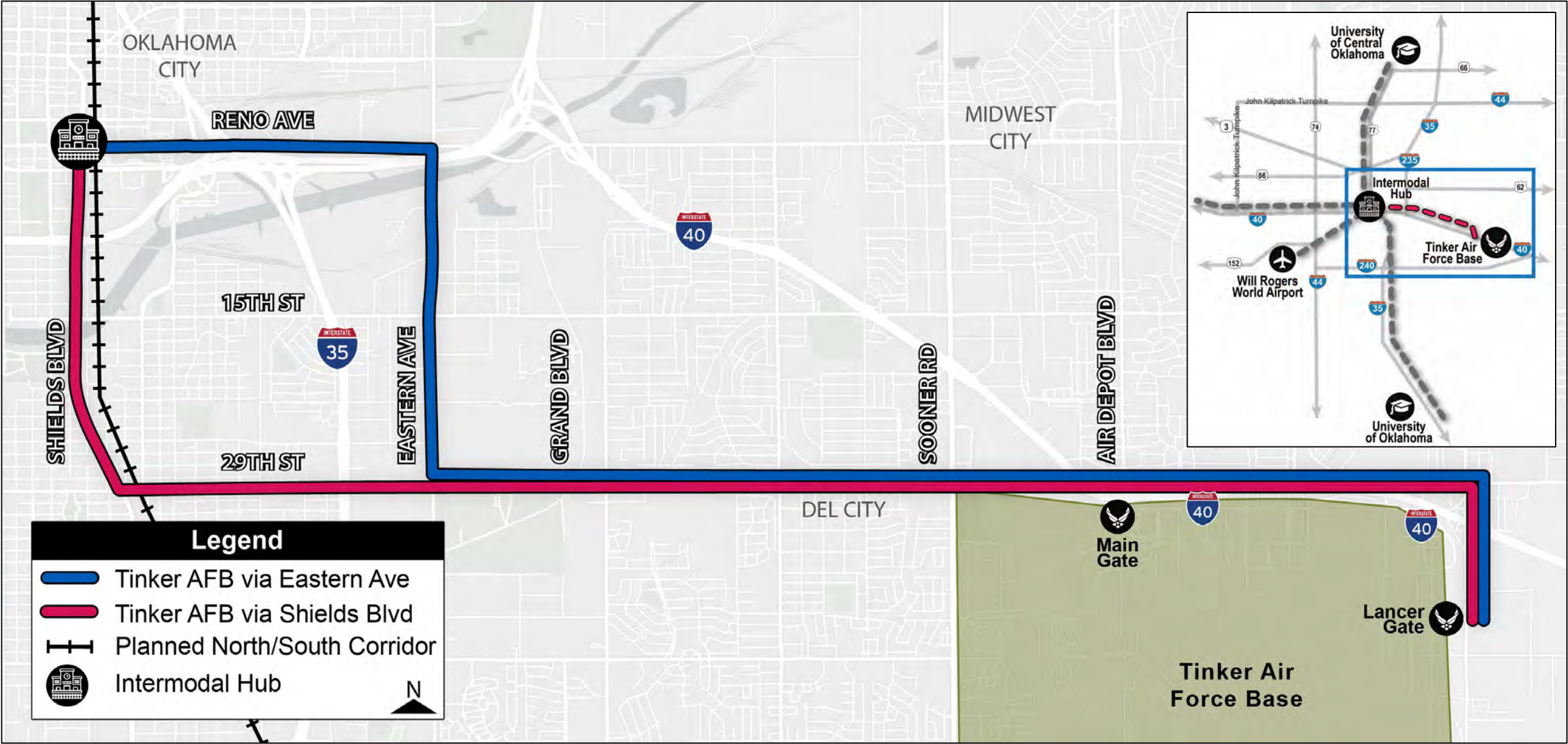
**Capital and
Operating Cost**

**Engineering
Constraints**

The background is a detailed line drawing. The right side shows a train with multiple cars on tracks, receding into the distance. The left side shows a close-up of a ship's deck with various mechanical components like hatches and railings. A vertical purple line separates the two scenes. The text 'BOARD ACTION' is centered over the purple line in a large, white, bold, sans-serif font.

BOARD ACTION

East Corridor Recommendation



Overall: Year 2 Look Back



**Analyzed 12 alignments
and 3 modes on the
East Corridor**



**Engaged the TWG,
Tinker AFB, Member
Cities, ODOT, and
BNSF**



**Defined a preferred
service vision**



**Continued a
collaborative process
with BNSF**

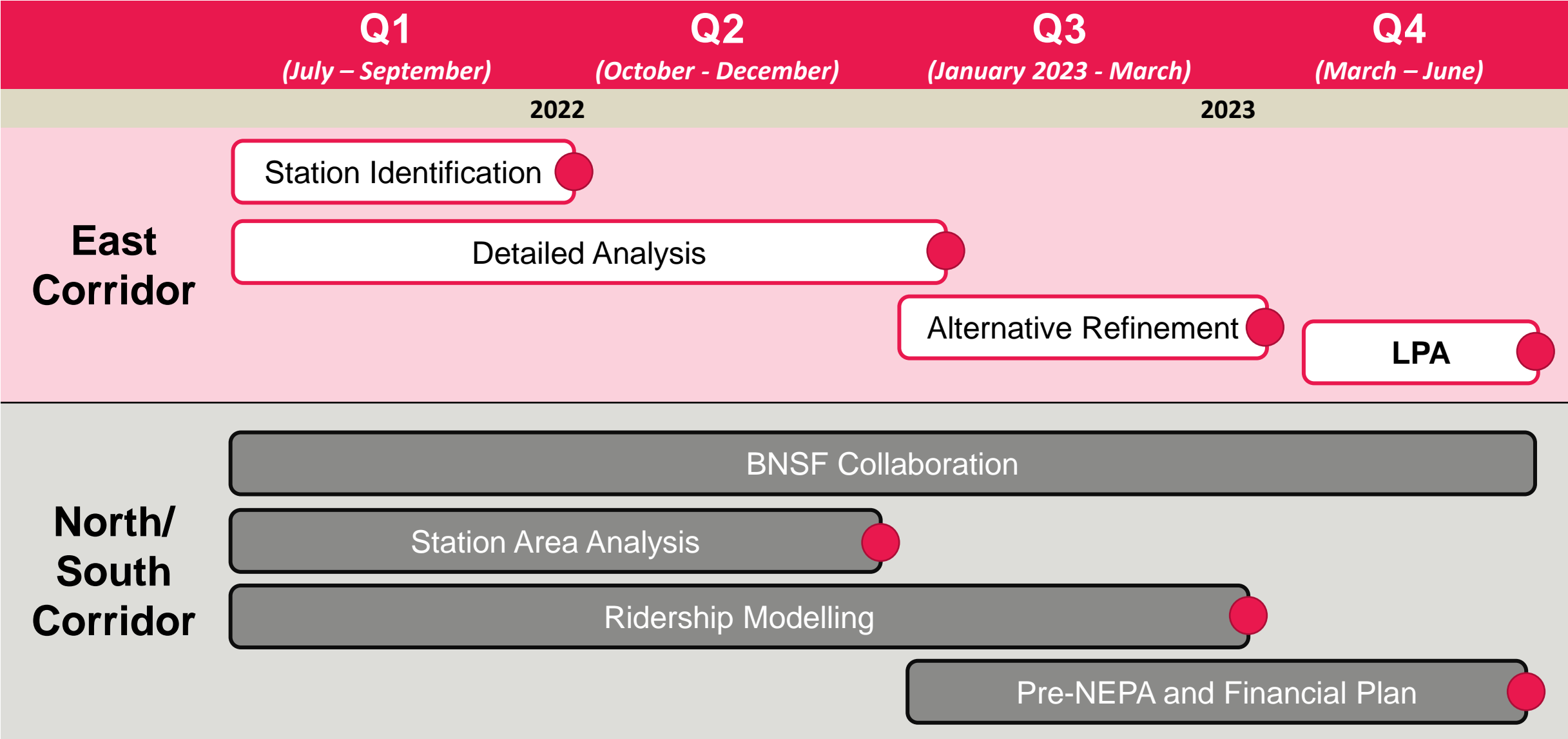


**Applied for a federal
funding opportunity**

The background of the image is a photograph of a train in a station, viewed from a low angle looking down the tracks. The train is dark-colored and has multiple windows. The tracks and platform are visible. A white line runs vertically down the left side of the image, separating a white area from a dark purple area. The text is centered in the white area.

YEAR 3 LOOK AHEAD

Year 3 Key Milestones (FY 23)



● = Milestone

The background is a detailed architectural line drawing of a train station. A train is shown on the tracks, moving towards the viewer. The station has a high ceiling with structural beams and supports. The drawing is in a light, sketchy style. Overlaid on the center of the image is the text 'TOWN HALL' in a large, bold, white sans-serif font.

TOWN HALL

Town Hall Event

- Tonight on Zoom
- Provide project update
- Q&A
- Video recording to be posted later on website



A stylized line drawing of a train on tracks, viewed from a low angle looking down the tracks. The train is composed of several connected cars. The entire image is overlaid with a semi-transparent purple filter. The text 'THANK YOU' is written in large, white, bold, sans-serif capital letters across the center of the image.

THANK YOU