

# Alternatives Analysis

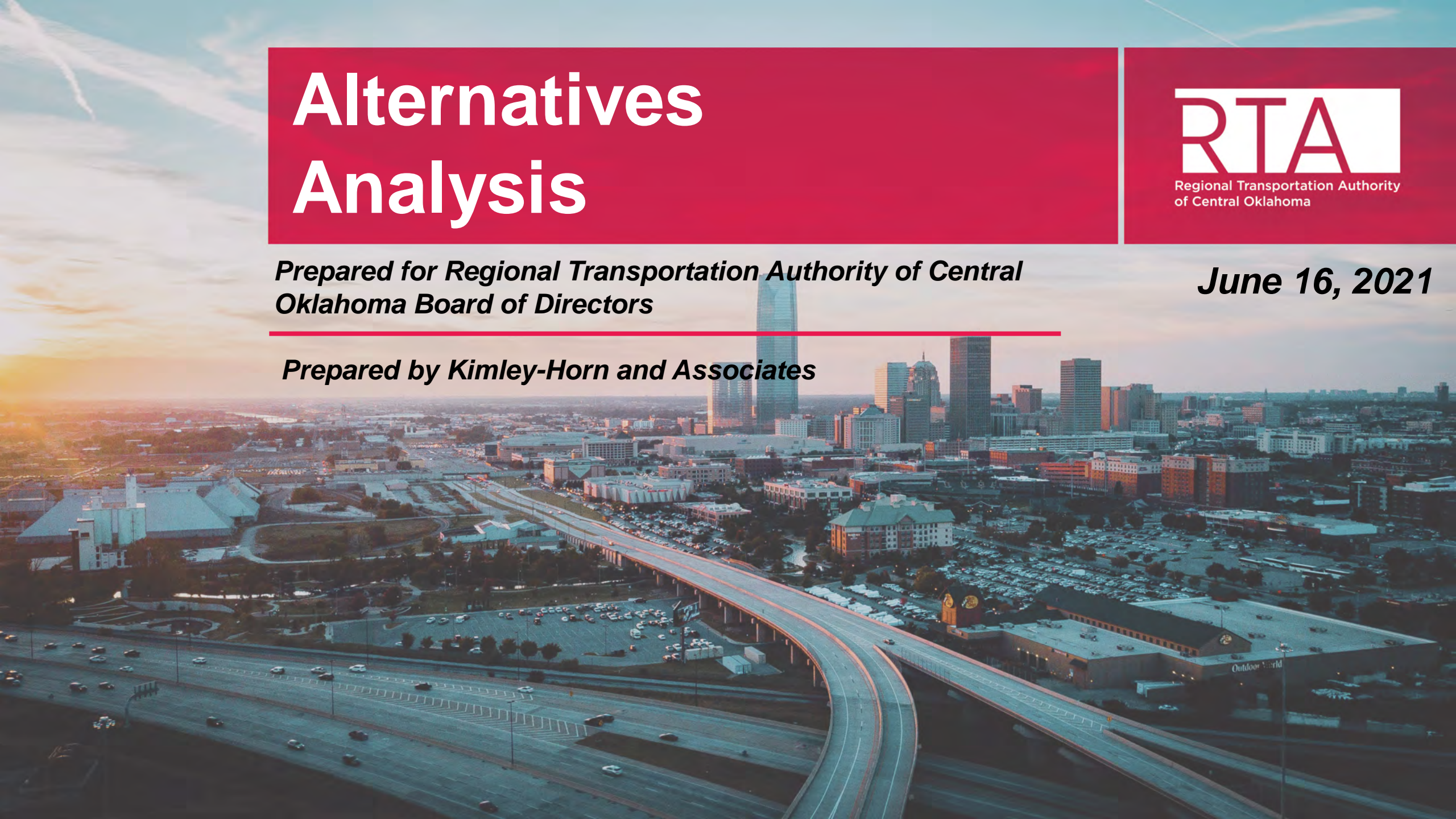


*Prepared for Regional Transportation Authority of Central  
Oklahoma Board of Directors*

---

*June 16, 2021*

*Prepared by Kimley-Horn and Associates*





# Agenda

---

- Alternatives Analysis Introduction
- Corridor Analysis Recommendations
- Workplan and Engagement
- Next Steps



# Accomplishments To-Date



Board  
Briefings



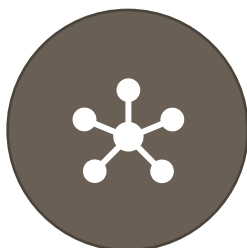
Public Engagement  
& Outreach



Developed  
Goals



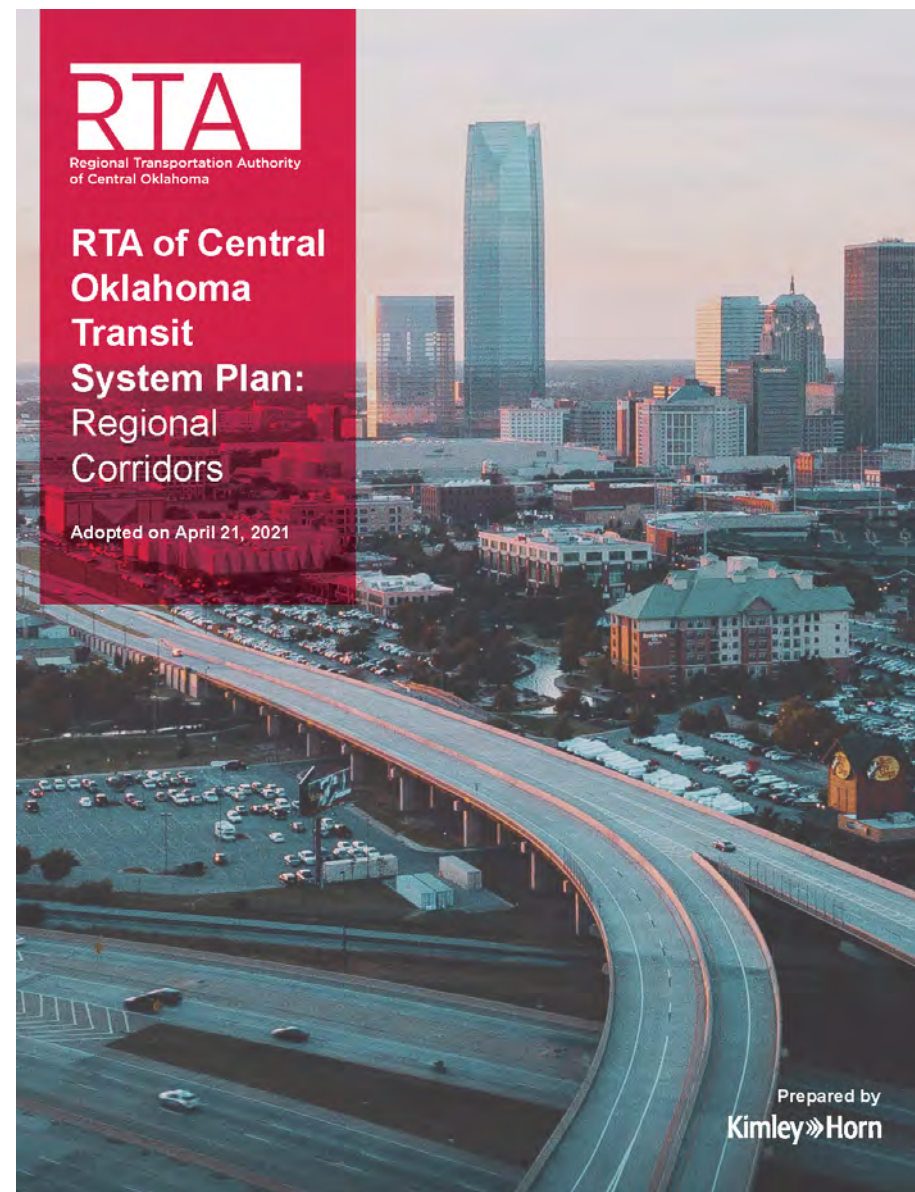
Mobile  
Meeting Kit




Identified  
Regional  
Corridors



Adopted  
Transit  
System Plan





The background of the slide features a photograph of a train at a station platform, viewed from a low angle looking down the tracks. Overlaid on this image is a white line-art technical drawing of a train's side profile, showing various mechanical details like windows, doors, and internal components. The text is centered over the image in a large, bold, white sans-serif font.

# ALTERNATIVES ANALYSIS INTRODUCTION

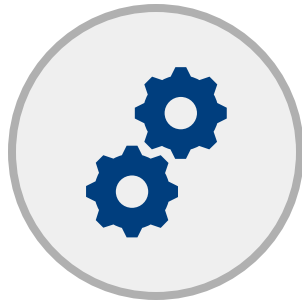


# What is an Alternatives Analysis?



## Transit System Plan

Identifies corridors



## Technical Process

Used to identify a feasible transit solution per corridor



## Preferred Alignment

Identifies where transit solution will operate



## Preferred Transit Option

Identifies type of transit service to implement



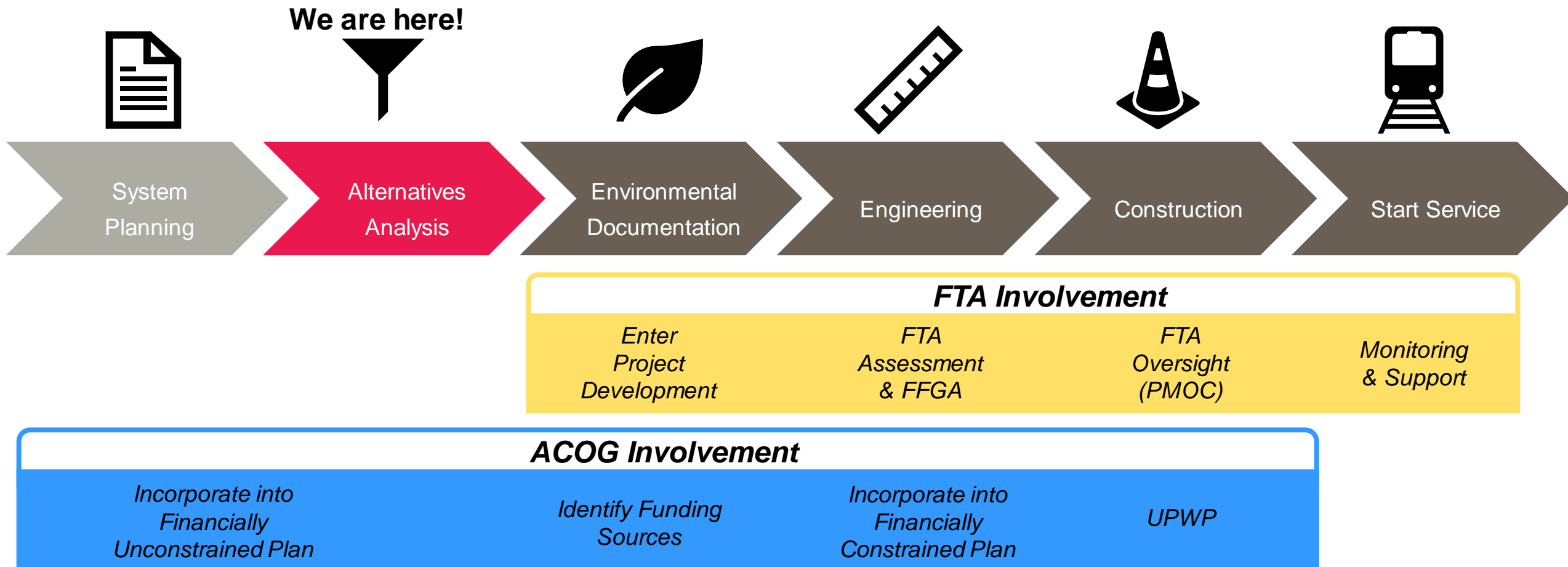
## FTA Involvement

Prepares corridor for FTA involvement

**COMMUNITY ENGAGEMENT**



# Project Development Process







# Alternatives Analysis Terms

---

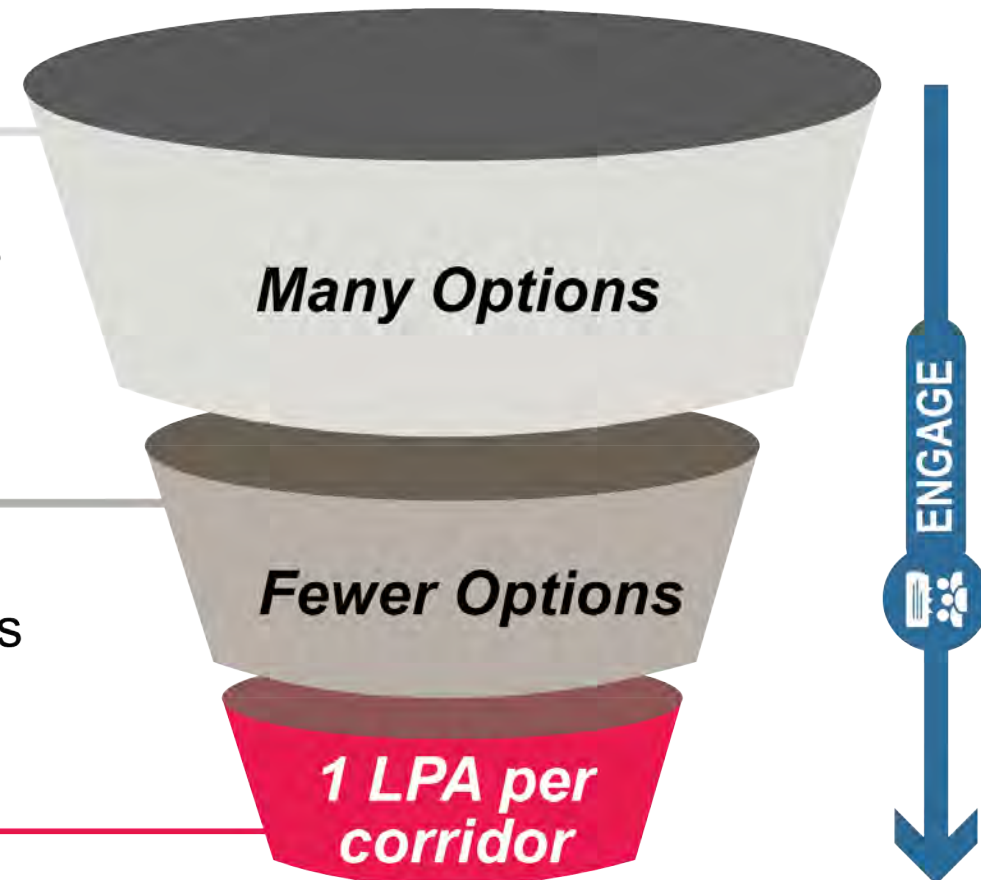
- **Alternative:** Logical solutions to achieve transportation objective/goal, including transportation mode and alignment
- **Locally Preferred Alternative (LPA):** Community's supported alternative to be advanced into the federal process



# Alternative Analysis (AA) Process

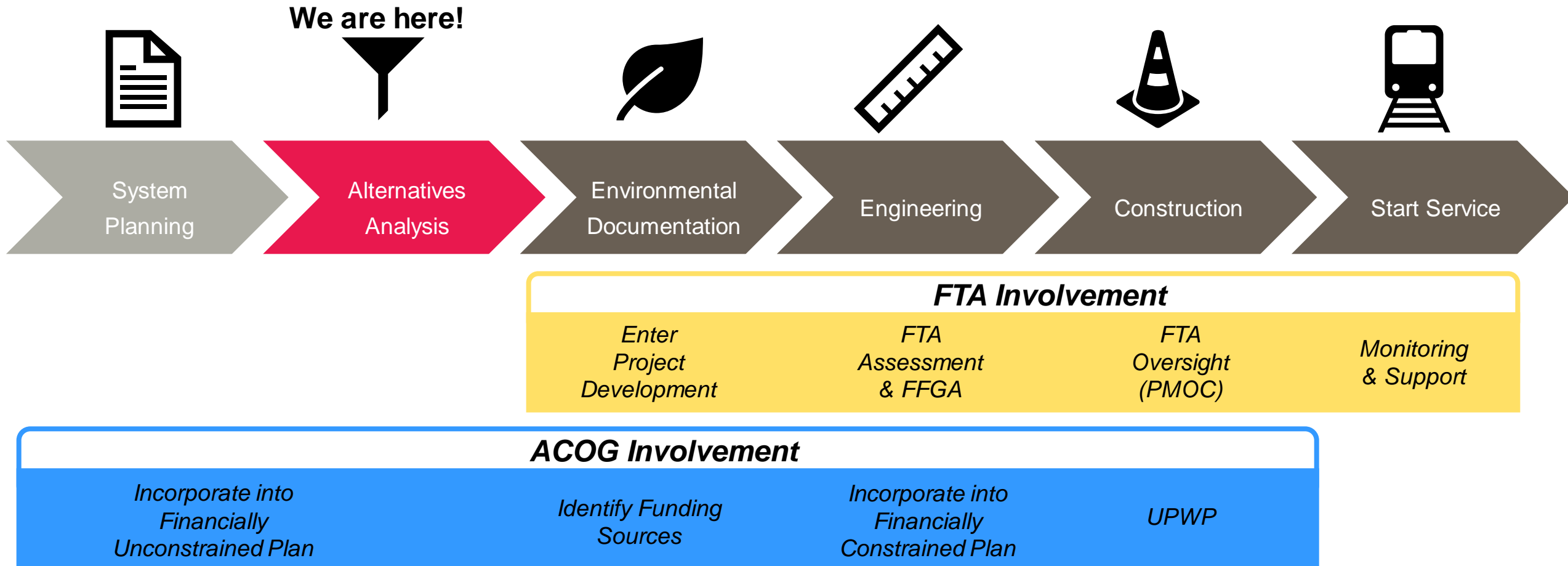


- 1 DISCOVER**
  - Define all reasonable alternatives
  - Screen against goals & objectives
- 2 REFINE**
  - Advance remaining alternatives
  - Perform detailed technical analysis
- 3 SELECT**
  - Board consideration of LPA





# Process Next Steps





The background of the slide features a photograph of a train on tracks, viewed from a low angle looking down the length of the train. Overlaid on this photograph is a semi-transparent technical line-art drawing of the same train and tracks, creating a layered, engineering-like aesthetic. The text is centered over the middle of the image.

# **CORRIDOR ANALYSIS RECOMMENDATIONS**



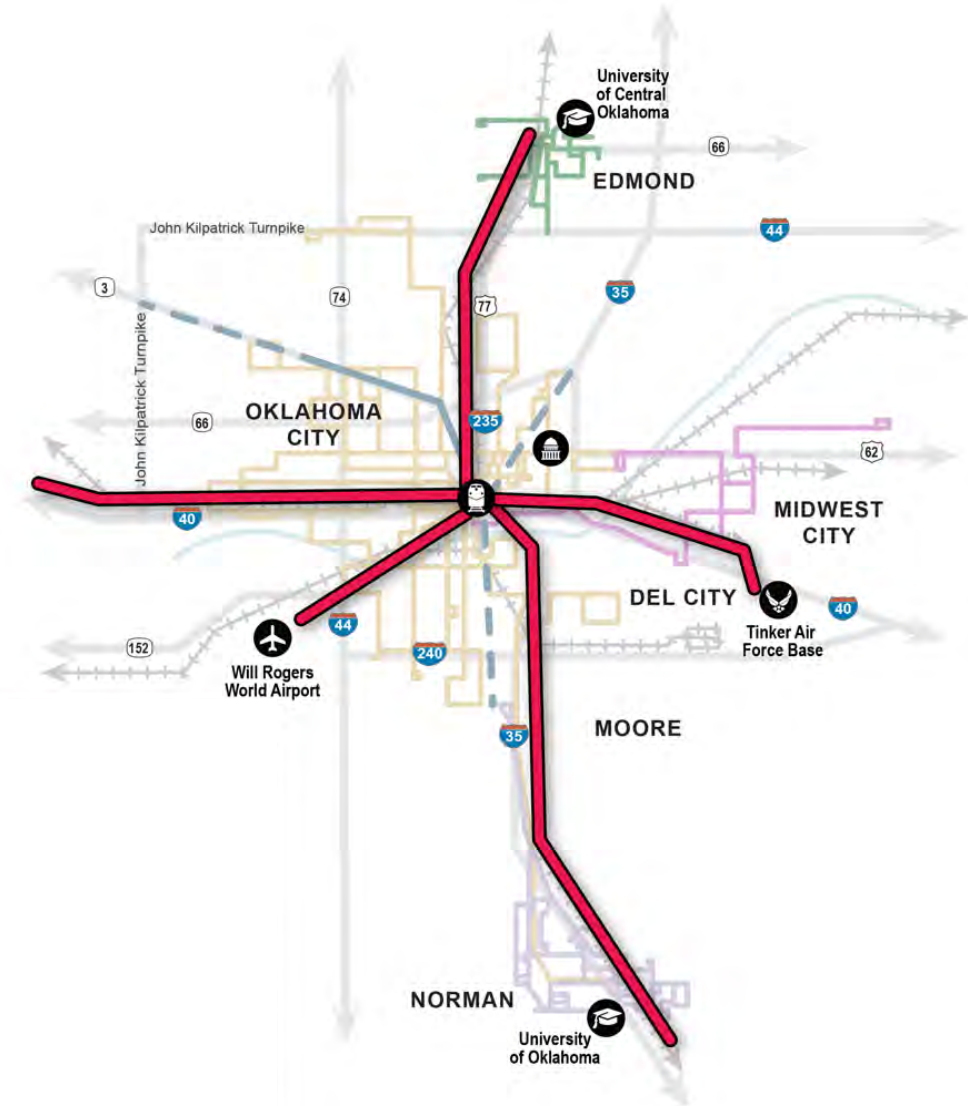
# Prior Studies

Year Published	Study Name	Sponsor	Key Findings/Purpose
2005	Fixed Guideway Study	COTPA	Identifies 2030 System Plan Vision including blend of enhanced bus, BRT, streetcar, and commuter rail corridors
2011	Intermodal Transportation Hub Master Plan	ACOG	Identifies a feasible, centralized intermodal hub site to accommodate fixed guideway system identified in 2005 Study
2015	Commuter Corridors Study	ACOG	Analyzes corridors from 2005 Study, and recommends North (to Edmond) and South (to Norman) commuter rail corridors, and streetcar east to Tinker AFB
2016	Encompass 2040	ACOG	Metropolitan Transportation Plan identifies how to invest \$10b in transportation system over 25-year horizon within the OCARTS area



# Path Forward

- Determine readiness of each of the corridors
- Recommend actions to take in the next year

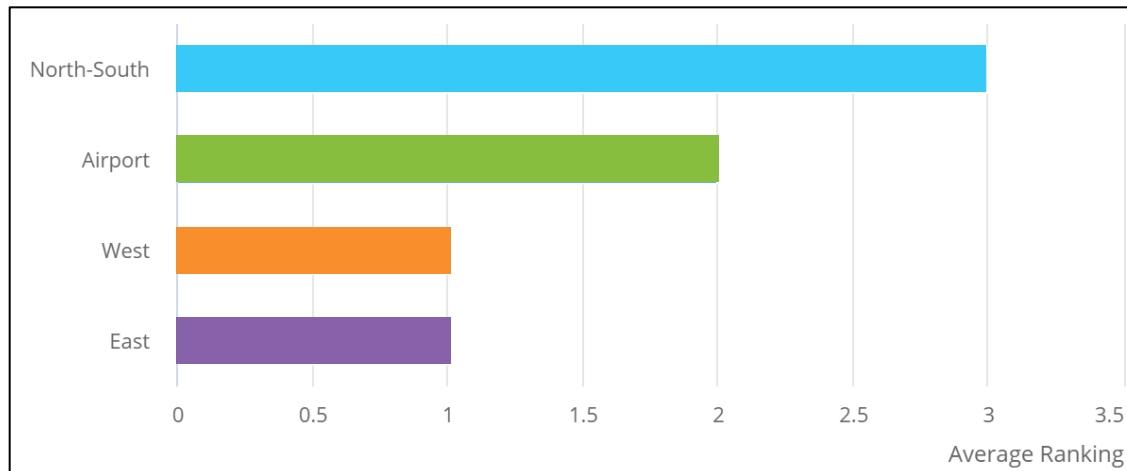




# Preliminary Engagement: Corridors

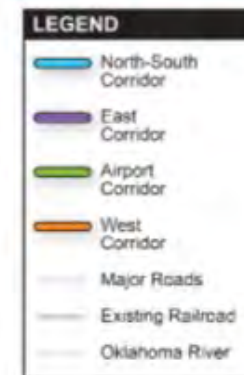
*RTAMoves.com (March-April 2021)*

- Rank the potential regional transit corridors by dragging them into the white “Move corridors here” box in the order of importance.



Scroll down to rank the corridors!

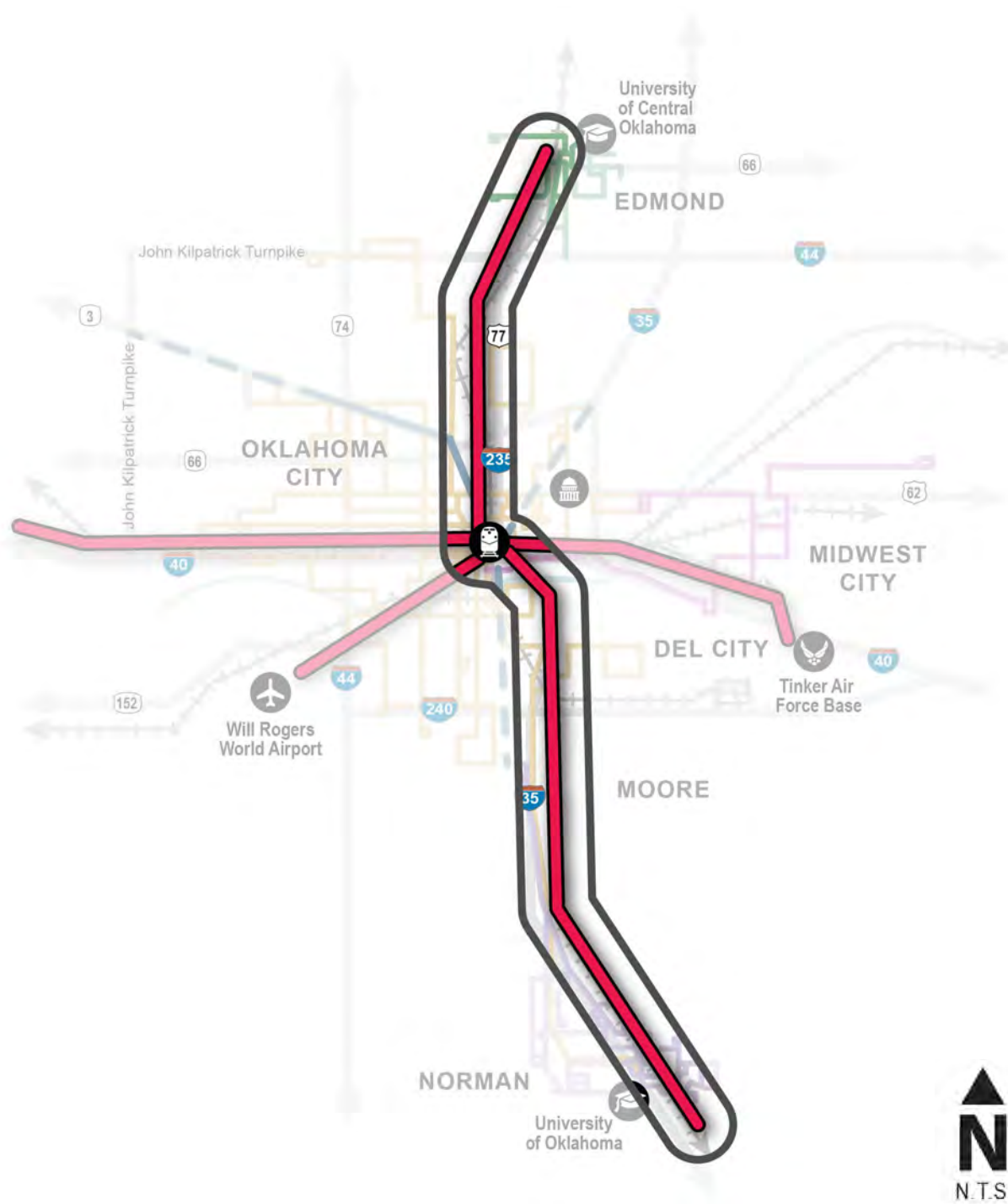
RTA Transit System Plan: Potential Regional Transit Corridors





## LEGEND

-  Potential Regional Transit Corridor
-  Initiatives by Others (Under Design)
-  Initiatives by Others (Under Study)
-  Edmond Existing Fixed-Route Bus System
-  OKC Existing Fixed-Route Bus System
-  Midwest City Existing Fixed-Route Bus System
-  Norman Existing Fixed-Route Bus System
-  Major Roads
-  Existing Railroad
-  Oklahoma River



## North/South Corridor

- Identified in previous study
- Significant analysis completed previously
- Previous analysis still applicable



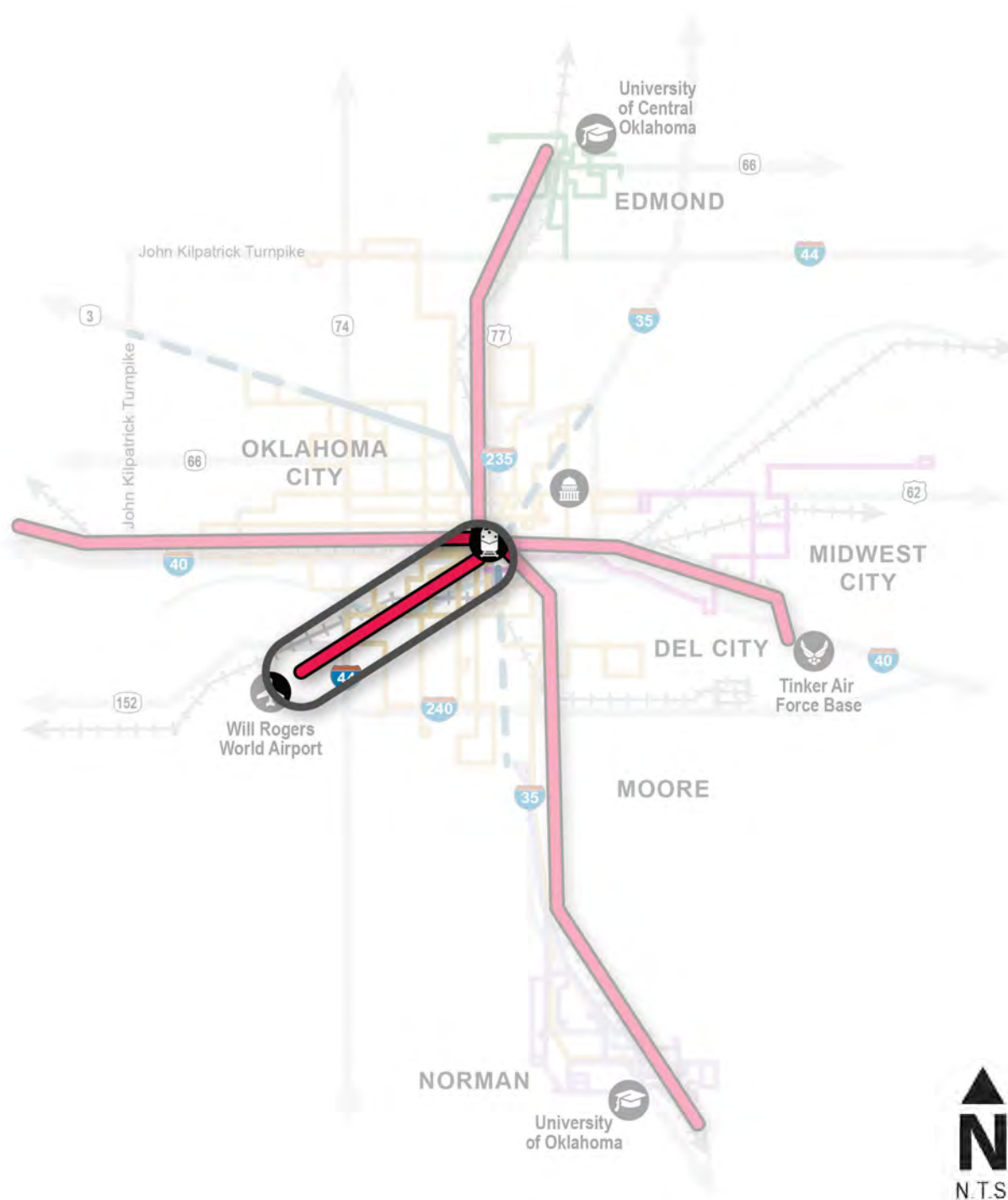
### Consultant Recommendation:

Leverage past study  
conclusions  
Advance to service and  
operations analysis



## LEGEND

-  Potential Regional Transit Corridor
-  Initiatives by Others (Under Design)
-  Initiatives by Others (Under Study)
-  Edmond Existing Fixed-Route Bus System
-  OKC Existing Fixed-Route Bus System
-  Midwest City Existing Fixed-Route Bus System
-  Norman Existing Fixed-Route Bus System
-  Major Roads
-  Existing Railroad
-  Oklahoma River



## Airport Corridor

- Strong community interest during system plan process
- Potential to synergize with other Corridors through Santa Fe Station



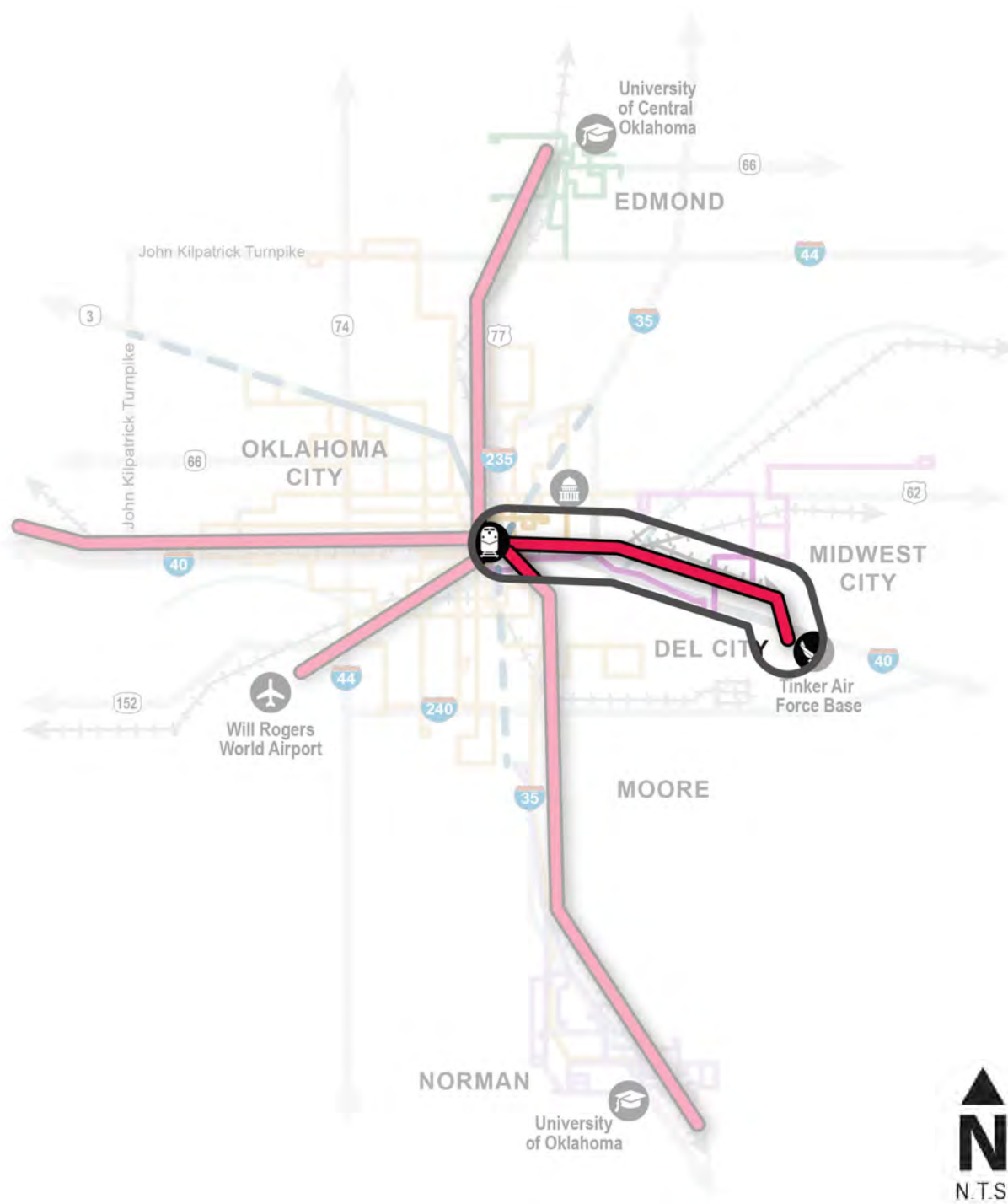
**Consultant  
Recommendation:**

Conduct full AA



## LEGEND

-  Potential Regional Transit Corridor
-  Initiatives by Others (Under Design)
-  Initiatives by Others (Under Study)
-  Edmond Existing Fixed-Route Bus System
-  OKC Existing Fixed-Route Bus System
-  Midwest City Existing Fixed-Route Bus System
-  Norman Existing Fixed-Route Bus System
-  Major Roads
-  Existing Railroad
-  Oklahoma River



## East Corridor

- Identified in previous study
- Significant analysis completed previously
- 2015 recommendation misalignment with best practices



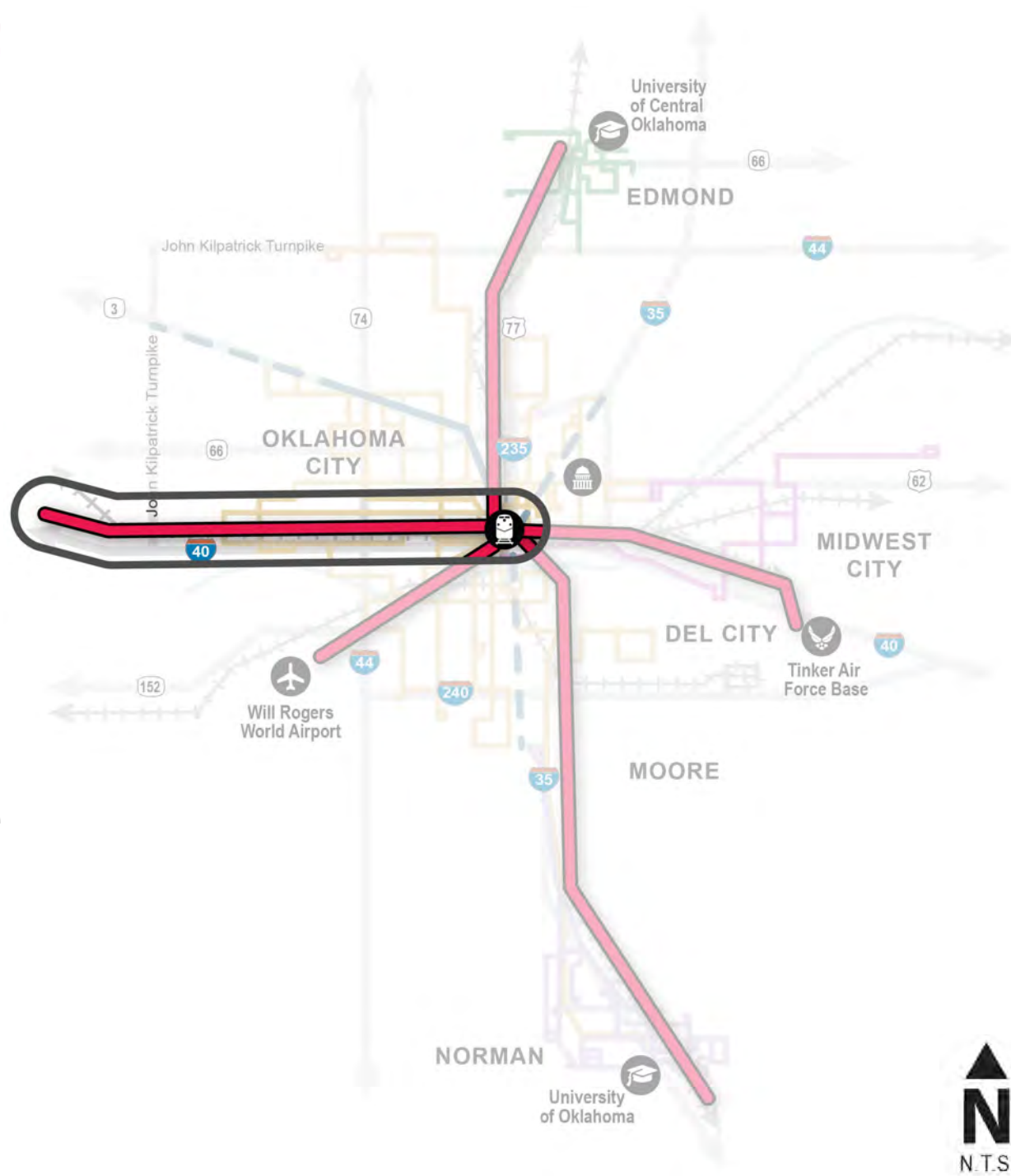
**Consultant  
Recommendation:**

Re-assess through  
full AA



## LEGEND

- Potential Regional Transit Corridor
- Initiatives by Others (Under Design)
- Initiatives by Others (Under Study)
- Edmond Existing Fixed-Route Bus System
- OKC Existing Fixed-Route Bus System
- Midwest City Existing Fixed-Route Bus System
- Norman Existing Fixed-Route Bus System
- Major Roads
- Existing Railroad
- Oklahoma River



## West Corridor

- Corridor of potential high opportunity
- End-of-line may extend beyond RTA boundary

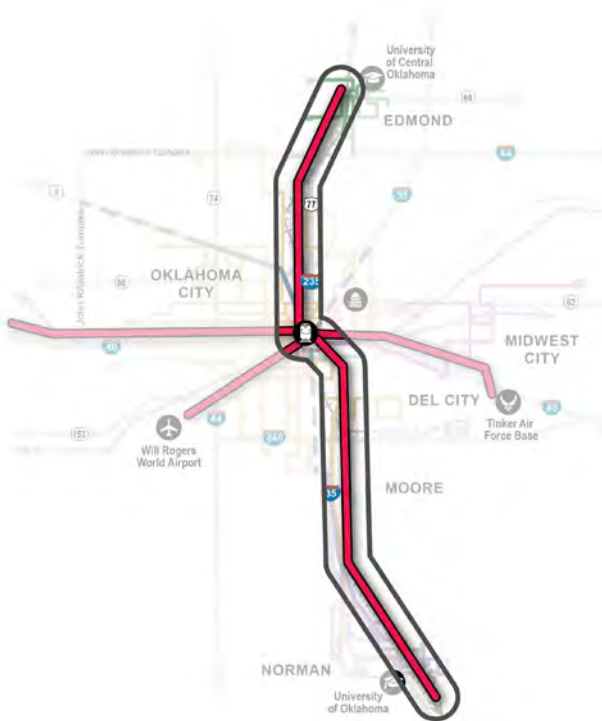


**Consultant  
Recommendation:**

Conduct full AA  
(pending funding)

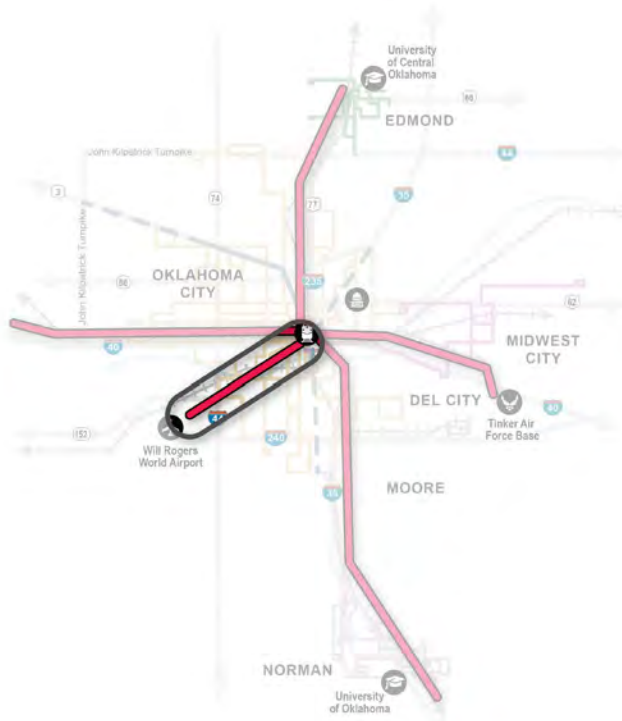


# Recap of Recommendations



## North-South Corridor

- Advance to service & operations analysis



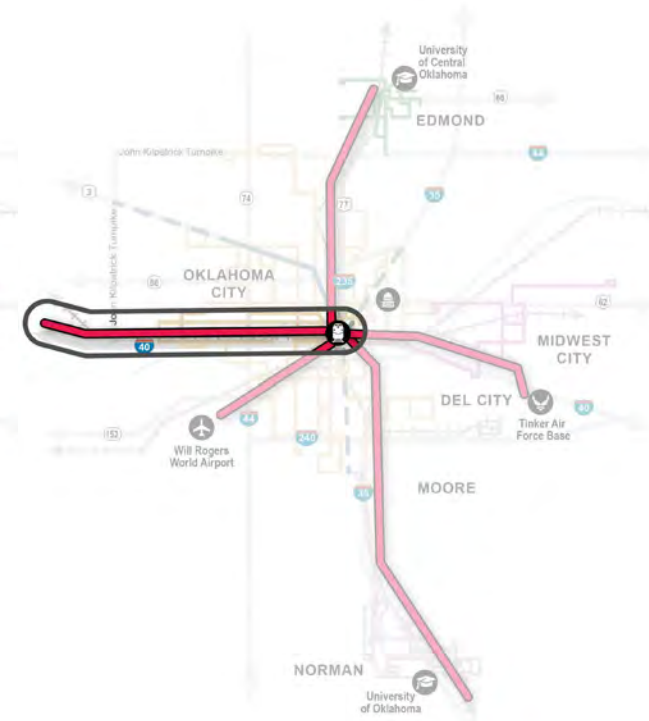
## Airport Corridor

- Conduct full Alternatives Analysis



## East Corridor


- Re-assess through full Alternatives Analysis



## West Corridor

- Conduct full Alternatives Analysis (pending funding)

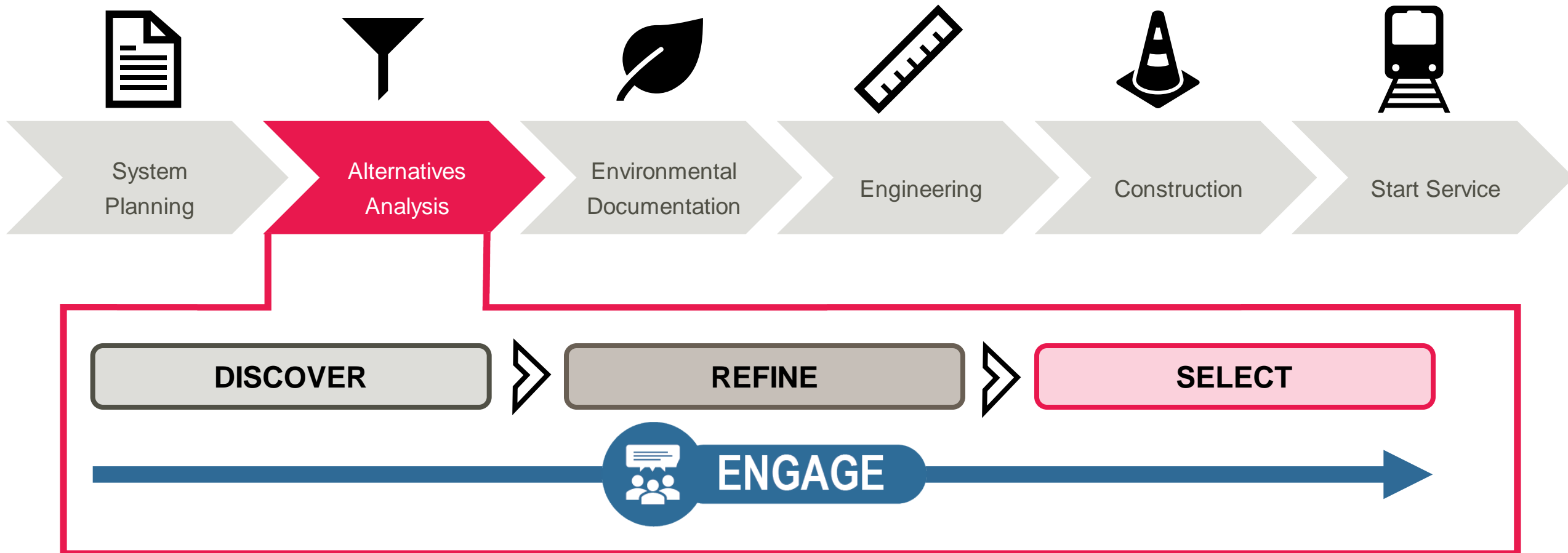




# WORKPLAN AND ENGAGEMENT

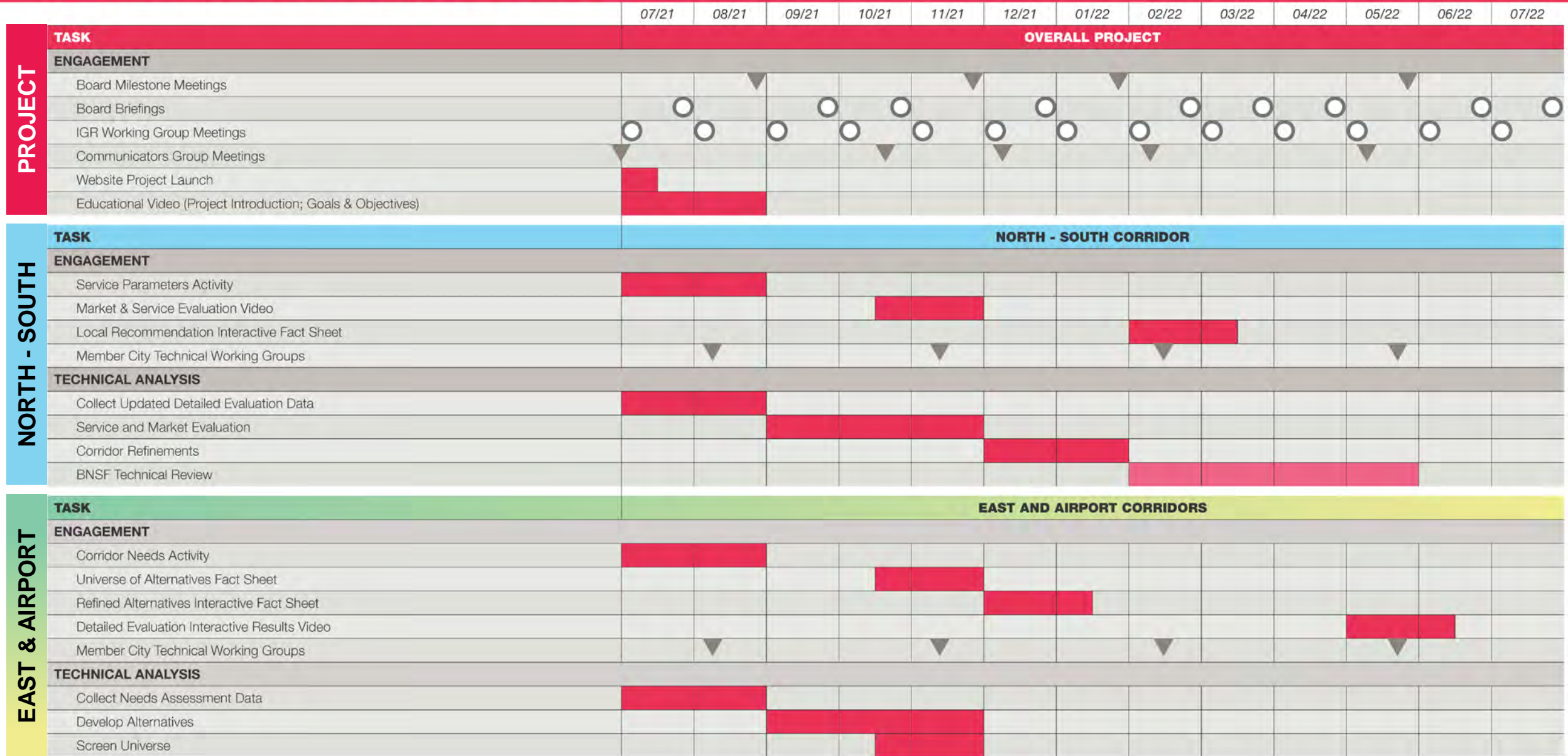


# Alternatives Analysis for RTA OK Corridors



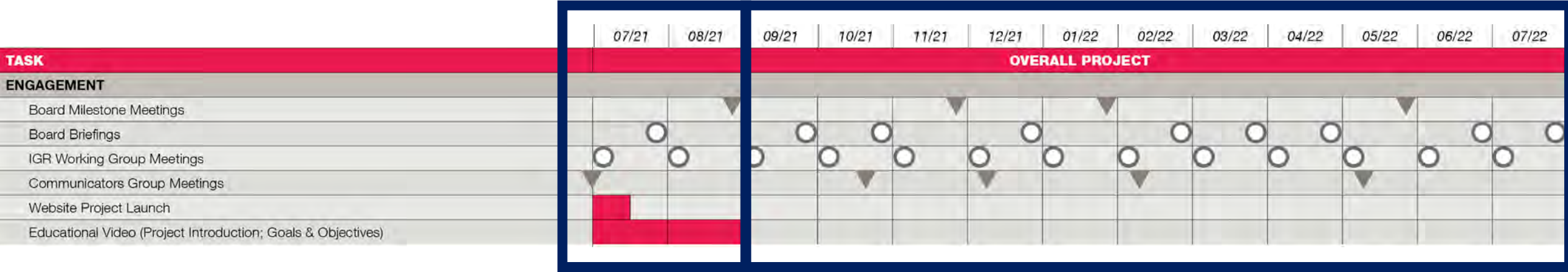


# MILESTONE SCHEDULE



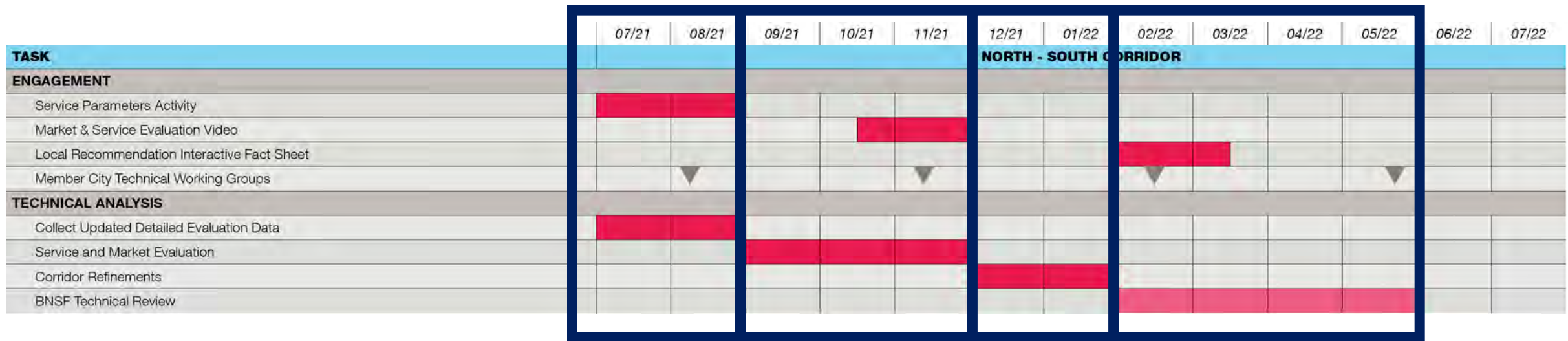
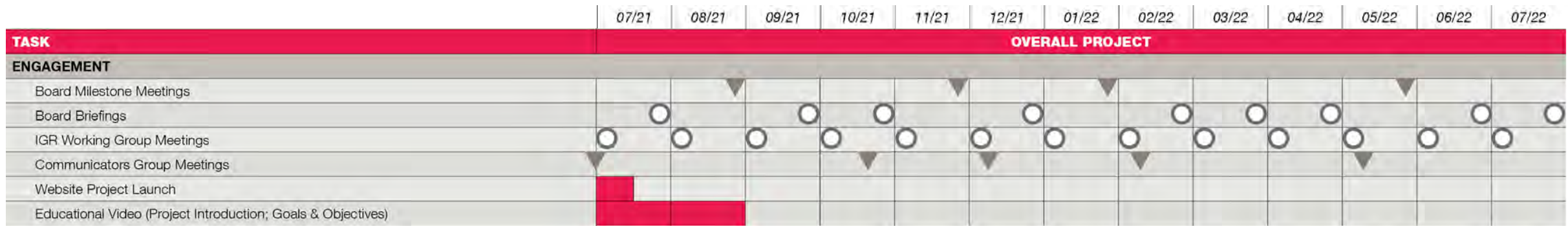


# MILESTONE SCHEDULE





# MILESTONE SCHEDULE





# MILESTONE SCHEDULE

	07/21	08/21	09/21	10/21	11/21	12/21	01/22	02/22	03/22	04/22	05/22	06/22	07/22
TASK	OVERALL PROJECT												
ENGAGEMENT													
Board Milestone Meetings													
Board Briefings													
IGR Working Group Meetings													
Communicators Group Meetings													
Website Project Launch													
Educational Video (Project Introduction; Goals & Objectives)													

	07/21	08/21	09/21	10/21	11/21	12/21	01/22	02/22	03/22	04/22	05/22	06/22	07/22
TASK	EAST AND AIRPORT CORRIDORS												
ENGAGEMENT													
Corridor Needs Activity													
Universe of Alternatives Fact Sheet													
Refined Alternatives Interactive Fact Sheet													
Detailed Evaluation Interactive Results Video													
Member City Technical Working Groups													
TECHNICAL ANALYSIS													
Collect Needs Assessment Data													
Develop Alternatives													
Screen Universe													
Collect Updated Detailed Evaluation Data													
Detailed Evaluation													
Corridor Refinements													



# Project Engagement: Values



## Equity

We will provide broad access and opportunity to collaborate and receive information while keeping potential barriers to participation incorporated in the process.



## Efficiency

Recognizing limited resources, we will engage in methods proven to reach a large number of people in a meaningful way.



## Transparency

We will provide timely information and updates to the public and stakeholders.



## Meaningful

Engagement methods will be utilized to gather feedback that is helpful to informing Project outcomes.

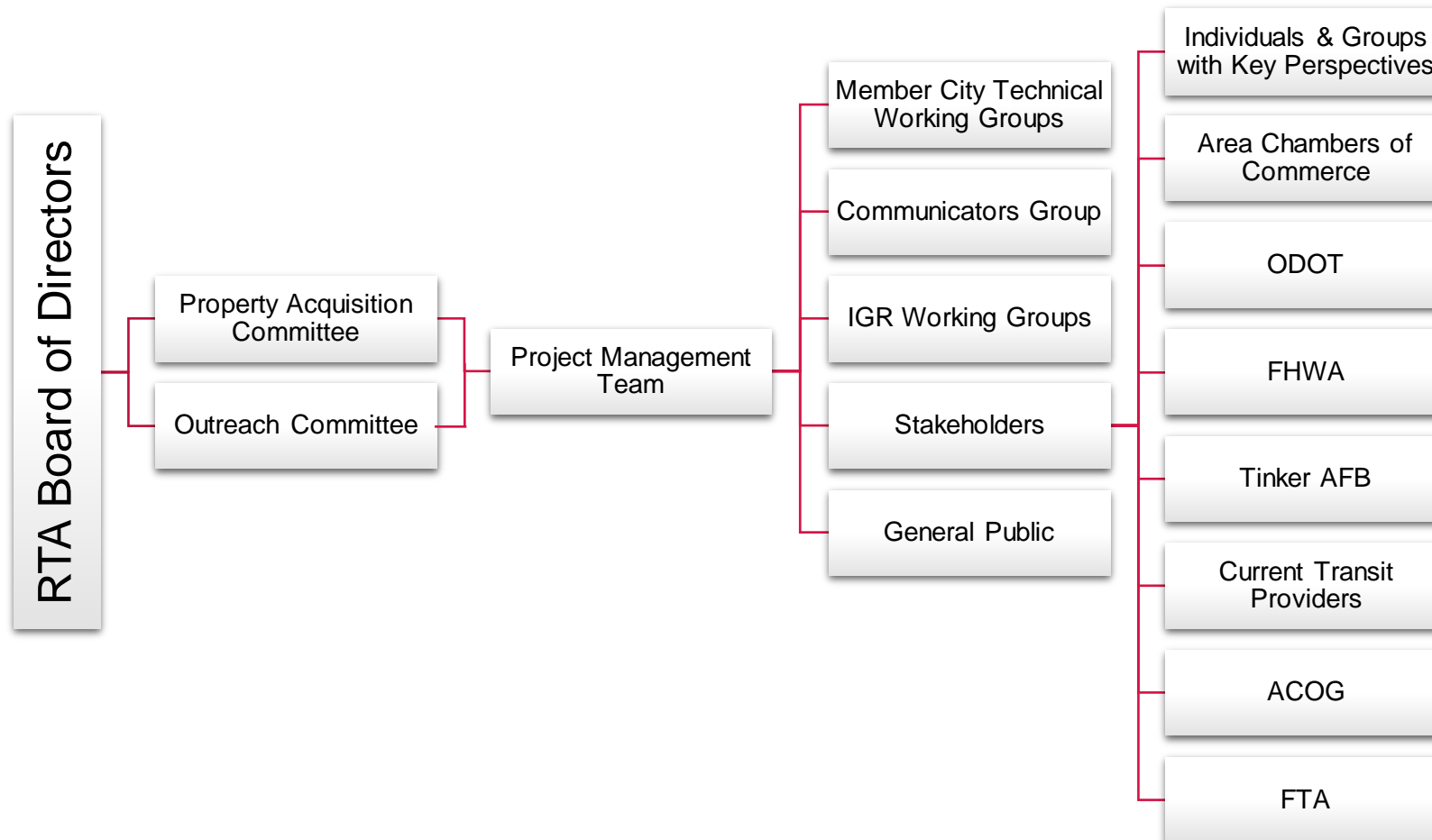


## Continuous Dialogue

Information will be regularly provided to the public and stakeholders while continuously offering availability for collaboration and comment throughout the Project.



# Project Engagement: Key Groups





# Next Steps

---



**Receive Board Direction**



**Launch Engagement Campaign**

- Overall Project
  - Website, educational video
- Corridor Specific Activities
  - Survey, interactive mapping



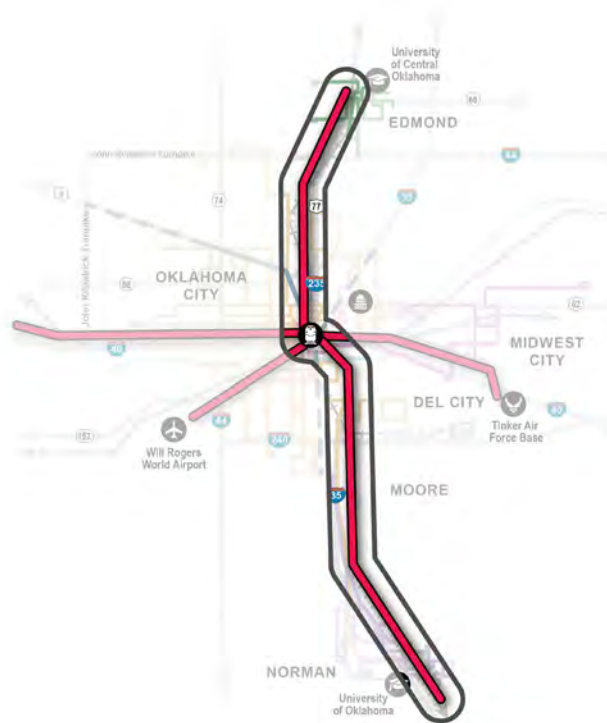
**Communicators Group Meeting**



**Member City Technical Working Group Meetings**

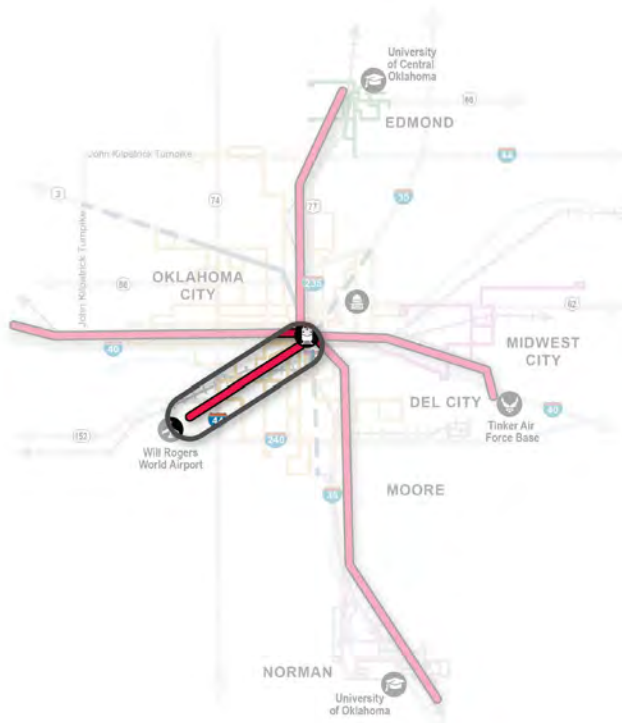


# Recap of Recommendations



## North-South Corridor

- Advance to service & operations analysis



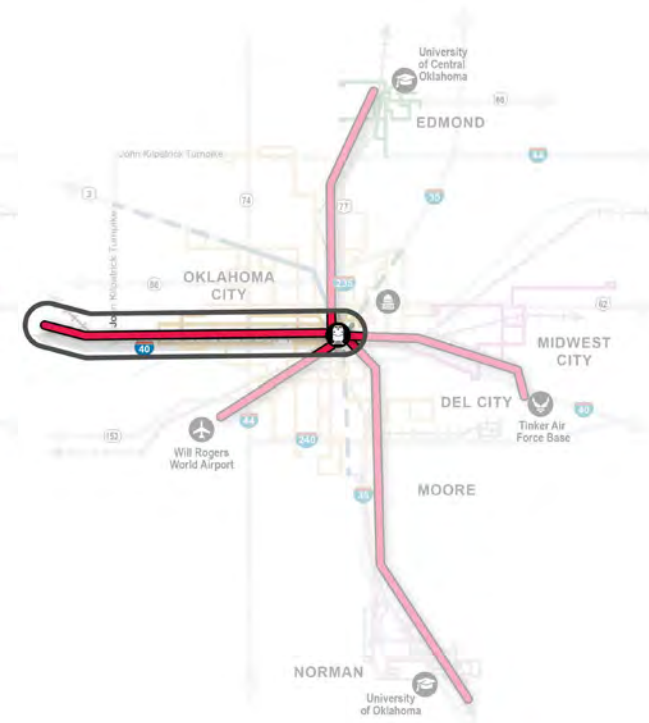
## Airport Corridor

- Conduct full Alternatives Analysis



## East Corridor

- Re-assess through full Alternatives Analysis



## West Corridor

- Conduct full Alternatives Analysis (pending funding)



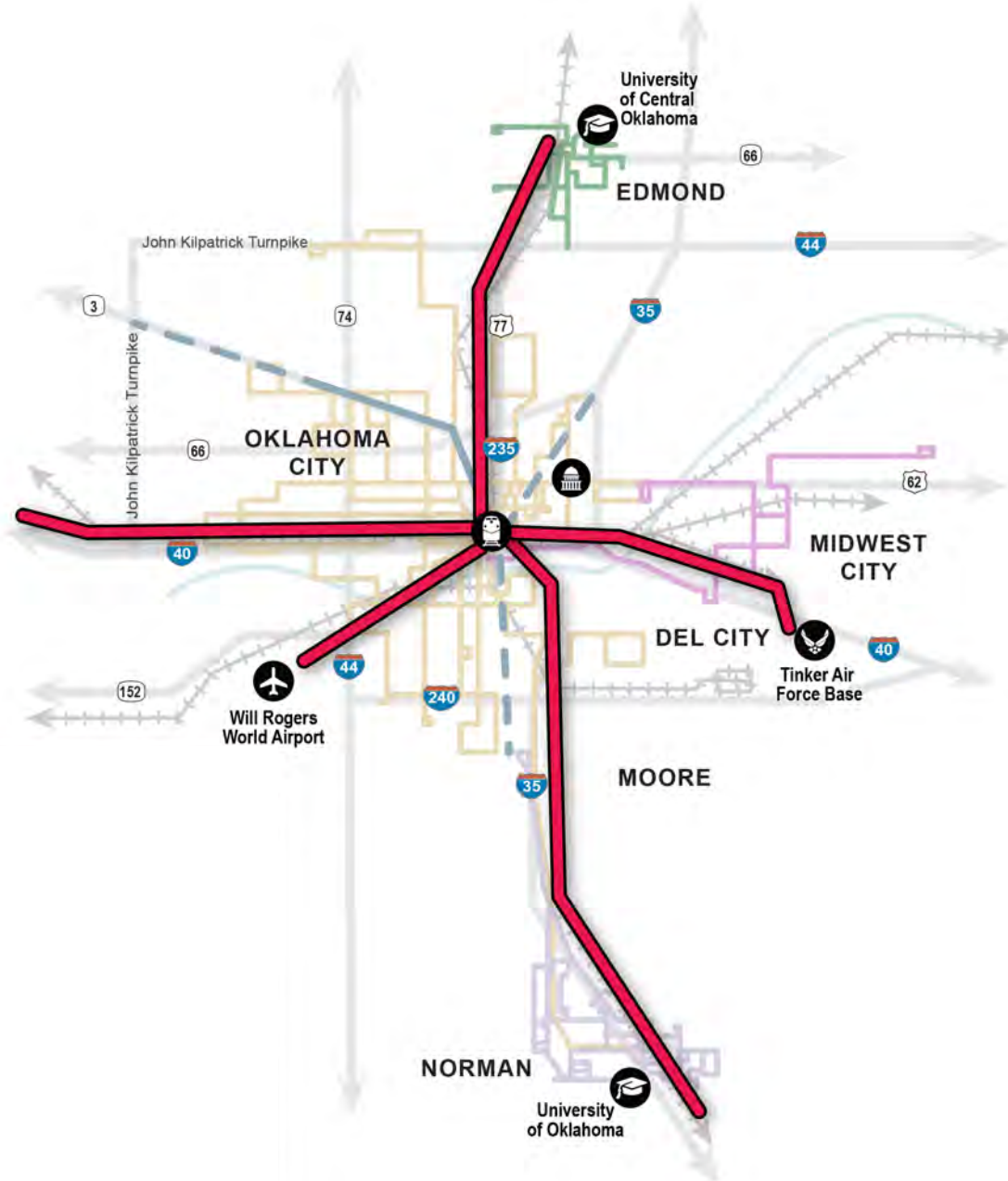
# Discussion

---



## LEGEND

-  Potential Regional Transit Corridor
-  Initiatives by Others (Under Design)
-  Initiatives by Others (Under Study)
-  Edmond Existing Fixed-Route Bus System
-  OKC Existing Fixed-Route Bus System
-  Midwest City Existing Fixed-Route Bus System
-  Norman Existing Fixed-Route Bus System
-  Major Roads
-  Existing Railroad
-  Oklahoma River



## RTA Transit System Plan